



2022

Guide for

International Students

What's next...



Contents

Why choose RMIT?	4
Explore our campuses	6
Melbourne campus maps	7
Life in Melbourne	8
Life at RMIT	9
Academic English pathways	10
Foundation Studies pathways	10
Get future ready	11
Accommodation and expenses	12
Architecture	14
Art	15
Biomedical Sciences	16
Building	17
Business	18
Communication	21
Design and Game Design	22
Education	23
Engineering	24
Fashion and Textiles	27
Health Science	28
Information Technology	30
Law	31
Media	32
Science	33
Social Science	35



A message from the Vice-Chancellor Martin Bean

At RMIT we focus on giving everyone the chance to be their best, shape their future and belong.

Thanks to the passion of our extraordinary people and our commitment to transformative education and research, we're making that a reality every day.

It began back in 1887 when Francis Ormond had a vision for helping workers acquire real-world skills. The people of Melbourne matched his enthusiasm to start a very practical place of learning where students would leave ready for employment.

We still live this vision today. As society and the economy have become more sophisticated and complex, RMIT has grown and changed alongside. Now, we're a global university of design, technology and enterprise.

We exist to prepare our students for workplaces that are rapidly evolving, and we play a part in shaping a changing world.

RMIT has been part of every new development in work and industry since our inception.

We're passionate about the communities we're part of and we're driven to make a purposeful contribution.

That's why we shape the world with our research and impactful partnerships with industry, government and enterprise.

We provide life-changing experiences when we give our students their first, second or even third opportunity to prepare for the world of work they aspire to.

Because today, more than ever, the transformational power of education is lifelong, generations deep and worldwide.

The one certainty is more and greater change in every industry and every location.

So with the world unlike it's ever been before, we're focused on ensuring our students are ready for life and work, whatever form that takes.

At RMIT, as we look to 2022 and beyond, we're excited about the possibilities.

Martin Bean CBE
Vice-Chancellor and President

Acknowledgement of Country

RMIT University acknowledges the people of the Woi wurrung and Boon wurrung language groups of the eastern Kulin Nations on whose unceded lands we conduct the business of the University. RMIT University respectfully acknowledges their Ancestors and Elders, past and present.

RMIT also acknowledges the Traditional Custodians and their Ancestors of the lands and waters across Australia where we conduct our business.

Artwork by Louisa Bloomer, Kamilaroi

Why choose RMIT?

RMIT has been awarded 5 QS stars in all possible categories:

- Teaching
- Innovation
- Employability
- Facilities
- Inclusiveness
- Research
- Internationalisation
- Specialist criteria (art and design)

Top 1%
of universities globally¹

#18
in the world out of all universities under 50 years old²

#1
university in the world for its efforts to reduce inequality³

#1 art and design university in Australia⁴
#15 art and design university in the world⁴

5-star
rated for Learner Engagement, Staff Qualifications and Skills Development

2000+
scholarships awarded to our students in 2020

#4
graduate employment rate in Australia⁵

#4
in Australia for our partnerships with employers⁶

97,000
students from 230+ different countries

\$1.8M+
allocated by RMIT Activator to fund 80 student start-ups since 2015

15,829
RMIT students undertook work-integrated learning placements with 2362 unique global industry partners throughout 2020

1 of 6
dual-sector universities in Australia



Excellence in Innovation

Winner of the 2018 Victorian International Education Awards for Excellence in Innovation in Partnership and International Engagement



Committed to sustainability

Winner of the Green Gown Award for Continuous Improvement: Institutional Change. The only university in Australasia to have received this award twice



Champion of inclusion

Winner of three separate awards at the 2019 Australian LGBTI Inclusion Awards, which recognise organisations around the country that foster and support diverse communities



Exemplar of good design

RMIT's Swanston Academic Building has been awarded a 5-star green rating and was shortlisted for the World Building of the Year Award in 2013. More recently, RMIT's New Academic Street won the Victorian Architecture Medal in 2018, along with five other prizes

¹ QS World University Rankings 2021
² QS Top 50 Under 50 2021

³ 2020 Times Higher Education (THE) University Impact Rankings
⁴ QS World University Rankings by Subject 2021
⁵ 2021 QS Graduate Employability Rankings
⁶ 2021 QS Graduate Employability Rankings



Industry Supporter



Design Partner



Industry Partner



Research Partner



Spirit of Australia

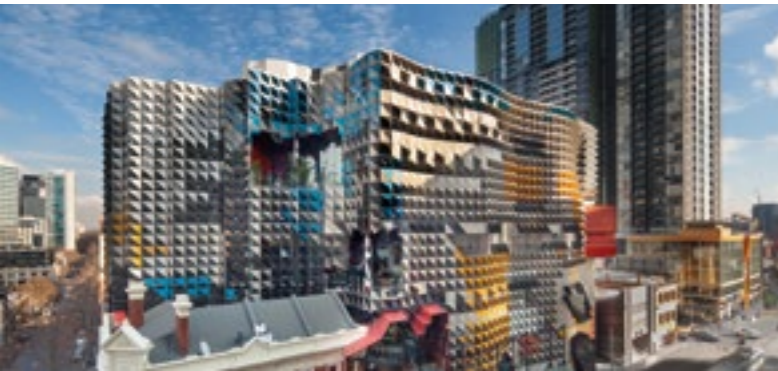
Future Pilot Program Partner

Explore our locations

Our award-winning locations are home to a thriving student population.

They are constantly evolving and expanding to meet the needs of our students and of modern university life.

Melbourne campus maps



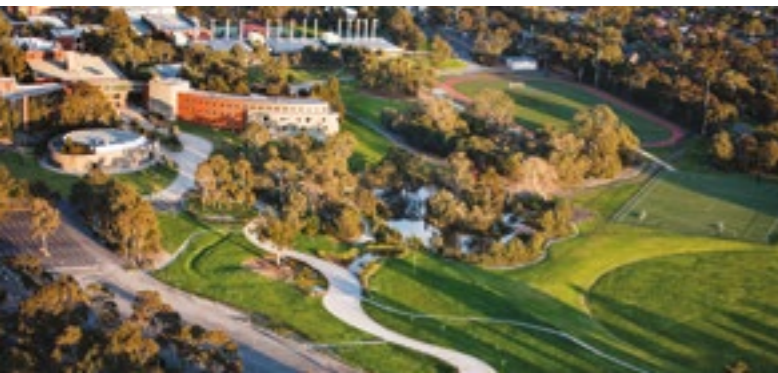
Melbourne

Situated in the heart of Melbourne city, the City campus has been an iconic part of the Melbourne skyline for more than 130 years.



Brunswick

Our Brunswick campus is a creative and multicultural hub. It is home to many of RMIT's design courses, including fashion, textiles, graphic and industrial design.



Bundoora

Situated in the north of Melbourne, the leafy Bundoora campus is home to many of RMIT's education, biomedical, health and science courses.



Flight Training Centres

Our Point Cook and Bendigo sites provide easy access to airspace, terrain and urban development to maximise navigational experiences.



Vietnam

Study abroad at RMIT Vietnam and experience an unforgettable semester in Asia. Our beautiful Hanoi and Saigon South campuses offer clean, green environments and expansive study spaces.



Europe

Opportunities exist for students to engage with our European centre through study tours, internships, research as well as online opportunities including industry projects, mentoring and guest lectures.



Life in Melbourne

Melbourne is a vibrant and welcoming city full of exciting possibilities. Students from more than 190 different countries have chosen to make it their home. Connect with them as you enjoy a world-class level of education and a lifestyle that will be the envy of all your friends.

Here are a few reasons to love Melbourne.

Recreation

Melbourne is known for its beautiful parks and gardens, clean air, open spaces, world-class venues and convenient transport and infrastructure.

- Melbourne is the second most liveable city in the world.¹
- Melbourne is the third best student city in the world.²

Art, culture and entertainment

Melbourne plays host to more than 8000 festivals, exhibitions and events every year.⁴ With a calendar of events spanning art, theatre, music, fashion, food, markets, festivals and concerts, there's always something to do in our bustling city.

- Melbourne has more live music venues per capita than any other city in the world.⁵
- Melbourne is the second city in the world to be designated a UNESCO City of Literature.⁶

Working while studying

During the semester, students can work up to 40 hours each fortnight. When there are no classes during the semester break, students may work full-time hours without restrictions. Research students are able to work full-time hours throughout the whole year.

For more information about your working conditions, rights and obligations in Australia, visit:

fairwork.gov.au

World-class dining

Melbourne's culinary spirit is world-famous. Whether you're looking to visit a much-loved institution, a lively new wine bar or a dressed-down cafe, Melbourne offers an array of unforgettable dining experiences.

- Melbourne is ranked as the sixth best city in the world for food and dining.³

Sport

Melbourne is the sporting capital of Australia. Watch international sports stars live in action at some of the many sporting events in our city every year. Here are six annual sporting events held in Victoria that are not to be missed:

- The Australian Open
- Formula One Australian Grand Prix
- Rip Curl Pro Bells Beach
- Boxing Day Test
- AFL Grand Final
- The Melbourne Cup

After graduating

If you complete two years of a bachelor degree, masters degree or PhD in Australia, you could be eligible for a Temporary Graduate visa, which allows you to live in Australia for a further two years or more.

For further information, visit:

bit.ly/temporary-graduate-485

bit.ly/extend-stay

Life at RMIT



Trips and tours

Looking for adventure? Take a break from the books and explore the city of Melbourne or the mountains, beaches and forests of Victoria on a student tour.

Cuddle a koala, go skiing on Mount Hotham, visit the Twelve Apostles, or just find the best brunch spot in town. See and experience it all with RMIT.



Sports and fitness

At RMIT we have more than 40 sports clubs, from basketball to Brazilian jiu jitsu. Join a club at RMIT and you're not just keeping fit and doing something you love; you'll also make lots of new friends and may even get to do some travelling.

The Redbacks are RMIT's sports team collective. Redback teams compete at a national level in the Australian University Games.

Whether you're sporty, creative or just curious, RMIT's clubs, collectives, events and trips will help you meet new people, make connections and discover more of Melbourne.



Mates at RMIT

New to Melbourne? If you're joining us from a regional, rural, interstate or international location, we'll help you settle in to your new home. Mates at RMIT connects you with current students to help make navigating university life a little easier.

Sign up as a student mentee and you'll get your own mentor to show you where to go and what to do around RMIT.



RMIT creative clubs

No matter what you choose to study, RMIT has a creative group, activity or collective that's open to you.

Our dance classes, performing arts troupes and media makers are always looking for new members and they're open to extroverts and introverts alike.

¹ Economist Intelligence Unit's global liveability index 2019

² 2019 QS Best Student Cities Rankings

³ Booking.com's list of the 25 best cities for food in the world

⁴ According to Melbourne City Council

⁵ 2017 census conducted by Music Victoria and the City of Melbourne

⁶ UNESCO.org – In 2008, it became UNESCO's second City of Literature

Academic English pathways



Over 50 years' experience
Teaching academic English



Centrally located
within the Melbourne CBD



Available for online study
during COVID-19 travel restriction



We test over 10,000
test takers every year

RMIT English Worldwide (REW) delivers the English for Academic Purposes (EAP) program, which prepares you for success at university by teaching you academic English while developing your skills for independent learning and group work at university.

- There are 6 REW levels (Elementary to Advanced Plus) with each level of study taking 10 weeks full-time to complete
- To enter your chosen program, you must successfully complete the academic English level on your letter of offer
- We will place you in a class that matches your most recent IELTS or other recognised English language proficiency test results (not more than 24 months old). See table below for the test result required for each level.

Note: If you do not have a recent IELTS score (or English test equivalent) you can sit a Placement Test at RMIT English Worldwide.

For more information, including start dates, fees and enrolment process, visit rmit.edu.au/english-programs

Level of English needed to enter each REW level of study						
Your current IELTS level	3.5	4.0	4.5	5.0	5.5	6.0
Recommended REW level of study	Elementary (10 weeks)	Pre Intermediate (10 weeks)	Intermediate (10 weeks)	Upper Intermediate (10 weeks)	Advanced (10 weeks)	Advanced Plus (10 weeks)
RMIT Level of Study				Foundation Studies and Vocational Education	Associate Degree	Higher Education

Foundation Studies pathways



Foundation Studies is your
pathway to RMIT University



Curriculum designed for
international students



Over 25 years experience
delivering Foundation Studies



Develop skills in critical
thinking independent
learning and group work

Entry level

Successful completion
of Australian Year 11 or
equivalent D average
IELTS (academic) 5.5
(No band below 5.0)



Foundation Studies program

Art, Design and Architecture
Business
General
Science, Engineering and Health



RMIT University

Degree
Associate Degree
Diploma

Dates

Foundation Studies commencement dates:

- 31 January 2022
- 18 July 2022

To find out about the guaranteed pathway requirements, visit rmit.edu.au/study-with-us/foundation-studies

Get future ready

Find a job, plan your career and check out all the opportunities for work and study at RMIT.

Job Shop

RMIT's Job Shop is your drop-in service centre for all things career-related. Job Shop offers services such as:

- resumé and cover letter reviews
- help finding job opportunities
- career workshops and events
- careers consultations.

rmit.edu.au/jobshop

RMIT Activator

Activator is RMIT's home of entrepreneurship. Its workshops, online learning and start-up programs position students to solve the biggest problems out there and take on the future of work. At Activator, you can access mentors, attend masterclasses, request business coaching, apply for funding and learn the enterprise skills you need to support your ideas.

No matter what your future looks like, plug into Activator's ecosystem of entrepreneurs, intrapreneurs, start-up founders and innovators and let it help you on your journey to success.

rmitactivator.edu.au

RMIT Creds

RMIT Creds are micro-credentials that develop your skill set beyond your area of study. These credentials have been co-designed with industry to ensure you're ready for the changing world of work. They cover subjects such as digital literacy, leadership, sustainability, innovation, collaboration and communication.

Most Creds are available online and are short in duration, ranging from 60-minute snippets to several hours of learning.

rmit.edu.au/creds

Work-integrated learning

At RMIT, work-integrated learning (WIL) is embedded into every stage of your student experience, so you have the opportunity to put what you've learned in the classroom into practice. Through industry work placements, internships, seminars, field trips, projects and mentoring, you'll be ready to make an impact from day one of your career.

Future Edge employability program

Future Edge is a flexible, co-curricular program designed to increase the employability of all RMIT students. The program helps you to craft and build your 'personal brand' in order to stand out in an incredibly competitive employment landscape. It will complement your time at RMIT and help you build industry-specific and practical skills to aid your transition into your career.

rmit.edu.au/future-edge

Accommodation and expenses

Melbourne is a fantastic city, but before you make your big move you'll need to do some research.



Our student accommodation partners

Want to live somewhere fully furnished, reasonably priced and with other students? Take a look at our recommended student apartments close to our City and Brunswick campuses:

rmit.edu.au/studentaccommodation

Living on campus

If you want to have RMIT on your doorstep, UniLodge at our Bundoora West campus might be for you. RMIT's state-of-the-art student accommodation offers a range of self-contained apartments, with rent, electricity, gas, water and internet all included in the cost.

Check out

unilodge.com.au/unilodge-rmit-bundoora

Before you arrive

If you are new to Melbourne, we recommend that you arrive at least two to three weeks before the start of classes to give you time to arrange long-term accommodation; short-stay accommodation can provide a place for you to stay while you are looking.



Short-term accommodation

It's a good idea to get to know the areas surrounding your campus before you commit to moving into a place long term. You can try renting temporary lodgings to get a taste of your location. See the link below for a selection of short-stay accommodation providers recommended by RMIT.

rmit.edu.au/temporary-accommodation

When you arrive

When you arrive in Melbourne, we recommend you meet with a student support advisor at RMIT Connect for advice on researching and inspecting properties. Our advisors can help you navigate the accommodation options below.



Long-term accommodation

Every suburb in Melbourne has its own unique character, so once you find a place that suits your personality and lifestyle you can choose a longer-term option.

rmit.edu.au/long-term-accommodation

And if you want to have RMIT right on your doorstep, UniLodge at our Bundoora West campus might be for you.

unilodge.com.au/unilodge-rmit-bundoora

Establishment costs

Before moving to Melbourne, you'll need to put aside \$AU3000 – 5000 to cover your set-up costs, such as a rental deposit, one month's rent in advance, furniture and household items.

Many student apartments come fully furnished, but most private rental homes do not. Ongoing costs will depend on your location and lifestyle.

Average weekly expenses in Melbourne

EXPENSE	\$AU
Rent (shared between two people)*	
■ City	270 – 284
■ Brunswick	215 – 285
■ Bundoora	185 – 210
Electricity and gas**	10 – 20
Phone and internet**	15 – 30
Public transport**	30 – 60
Entertainment**	80 – 150
Groceries and eating out	140 – 280
Estimated weekly total	460 – 825

*Average rental prices (as at February 2020) taken from realestate.com.au

**Average utility costs (as at February 2021) taken from studyinaustralia.gov.au

Are you under 18?

If you'll be under the age of 18 when you arrive in Australia, you must have accommodation and welfare arrangements organised and approved either by the Department of Home Affairs or RMIT before you leave home. This is to ensure you have proper day-to-day support to keep you safe and well.

rmit.edu.au/temporary-accommodation

Free airport pick-up

If you're a new international student, take advantage of RMIT's free airport pick-up service. For information on submitting your pick-up request, visit

rmit.edu.au/prepare-to-arrive

#28

in the world for architecture¹

#3

in Australia for architecture¹



Victorian Architecture Medal

Practices led by RMIT staff, adjunct professors or alumni have received the Victorian Architecture Medal every year from 2013 to 2020



Excellence in research

RMIT's research in architecture is rated as above world standard²



Learn abroad

Study in the heart of Los Angeles with our exchange partner, Southern California Institute of Architecture

¹ QS World University Rankings by Subject 2021

² Excellence in Research Australia 2018 National Report



For more information visit rmit.edu.au/architecture

Architecture

ARCHITECTURE										
	🕒	📍	📅	💰 2022	📄	IELTS	✓	📝	📈	🔗
Advanced Diploma of Building Design (Architectural)	2 years	City	Feb Jul	\$28,500	C6161	6.0 (5.5)	50%	-	-	-
Bachelor of Architectural Design	3 years	City	Feb Jul	\$46,080	BP250	6.5 (6.0)	-	Y	-	B
Bachelor of Landscape Architectural Design	3 years	City	Feb Jul	\$42,240	BP256	6.5 (6.0)	70%	Y	-	B, E
Master of Architecture	2 years	City	Feb Jul	\$45,120	MC163	6.5 (6.0)	-	Y	Y	-
Master of Landscape Architecture	2 years	City	Feb Jul	\$42,240	MC172	6.5 (6.0)	-	Y	Y	E
INTERIOR DESIGN										
Diploma of Interior Design	2 years	City	Feb Jul	\$23,500	C5396	5.5 (5.0)	50%	Y	-	-
Associate Degree in Interior Decoration and Design	2 years	City	Feb Jul	\$31,680	AD020	6.0 (5.5)	60%	Y	Y	-
Bachelor of Interior Design (Honours)	4 years	City	Feb Jul	\$42,240	BH115	6.5 (6.0)	70%	Y	Y	B, O
Master of Interior Design	2 years	City	Feb Jul	\$42,240	MC275	6.5 (6.0)	-	Y	Y	-
URBAN DESIGN										
Master of Urban Design	2 years	City	Feb Jul	\$44,880	MC193	6.5 (6.0)	-	Y	-	E
RESEARCH										
Master of Design (Architecture and Design)	2 years	-	All year	\$38,400	MR207	6.5 (6.0)	60%	-	-	FF
PhD (Architecture and Design)	4 years	-	All year	\$38,400	DR207	6.5 (6.0)	70%	Y	-	FF

Footnotes

- B July entry may be available to students who are granted course/subject exemptions or advanced entry based on previous study.
- E This course incurs additional costs.
- O This is a combined bachelor and honours degree, and entry is based on senior high school qualifications. Upon completion of this program, students graduate with honours without having to undertake an additional year of study. An honours degree allows you to deepen your knowledge and develop your research, analytical and communication skills, and it is a pathway into postgraduate and higher degree by research studies.
- FF Refer to rmit.edu.au/how-to-apply-for-research for reference.

KEY:

🕒 Duration 📍 Campus 📅 Intake/s 💰 2022 2022 annual fee (\$AU) IELTS Academic IELTS Overall Band (Individual Band) – subject to change
 📄 RMIT Code ✓ Entry requirement (min average % or GPA) 📝 Selection task 📈 Pathways 🔗 Notes
 For the most up-to-date information regarding RMIT courses and pathways, please visit rmit.edu.au

Art

FINE AND VISUAL ARTS										
	🕒	📍	📅	💰 2022	📄	IELTS	✓	📝	📈	🔗
Diploma of Visual Arts	1 year	City	Feb Jul	\$22,000*	C5348	5.5 (5.0)	50%	Y	-	-
Advanced Diploma of Visual Arts	1 year	City	Feb Jul	\$22,000*	C6149	5.5 (5.0)	-	Y	Y	A
Bachelor of Arts (Fine Art)	3 years	City	Feb Jul	\$34,560	BP201	6.5 (6.0)	65%	Y	Y	B
Master of Arts (Arts Management)	2 years	City	Feb Jul	\$3,4560	MC280	6.5 (6.0)	-	-	-	-
Master of Arts (Art in Public Space)	2 years	City	Feb Jul	\$34,560	MC281	6.5 (6.0)	-	Y	-	E
Master of Fine Art	2 years	City	Feb Jul	\$34,560	MC266	6.5 (6.0)	-	Y	-	-
PHOTOGRAPHY										
Certificate IV in Photography and Photo Imaging	1 year	City	Feb	\$22,750*	C4373	5.5 (5.0)	50%	Y	-	E
Diploma of Photography and Photo Imaging	1 year	City	Feb	\$22,250*	C5351	5.5 (5.0)	-	Y	Y	A
Bachelor of Arts (Photography)	3 years	City	Feb Jul	\$34,560	BP117	6.5 (6.0)	65%	Y	Y	B, E
Master of Photography	2 years	City	Feb Jul	\$34,560	MC270	6.5 (6.0)	-	Y	-	-
HONOURS										
Bachelor of Arts (Fine Art) (Honours)	1 year	City	Feb	\$34,560	BH052	6.5 (6.0)	2.0	Y	-	K
Bachelor of Arts (Photography) (Honours)	1 year	City	Feb Jul	\$34,560	BH125	6.5 (6.0)	2.7	Y	-	K
RESEARCH										
Master of Fine Art	2 years	-	All year	\$32,640	MR208	6.5 (6.0)	60%	-	-	FF
PhD (Art)	4 years	-	All year	\$32,640	DR208	6.5 (6.0)	70%	-	-	FF

Footnotes

- A This course is only available for advanced entry.
- B July entry may be available to students who are granted course/subject exemptions or advanced entry based on previous study.
- E This course incurs additional costs.
- K This is a one-year full time honour degree that is available for high performing students to apply after finishing their undergraduate degree in the relevant discipline. An honours degree allows you to deepen your knowledge and develop your research, analytical and communication skills, and it is a pathway into postgraduate and higher degree by research studies.
- FF Refer to rmit.edu.au/how-to-apply-for-research for reference.
- * Total fee.

#1

in Australia and Asia Pacific for art and design¹

#15

in the world for art and design¹



130+ years

RMIT offers one of the longest continuously running photography programs in the world



5 galleries

RMIT owns and operates five public galleries and exhibition spaces



7 studio specialisations:

- ceramics
- drawing
- gold and silversmithing
- painting
- print
- sculpture
- video

¹ QS World University Rankings by Subject 2021



For more information visit rmit.edu.au/art



Excellence in research

RMIT's research is ranked by the ARC as well above world standard in:

- clinical sciences
- pharmacology and pharmaceutical sciences



Only Victorian university

to offer all the following majors:

- haematology
- anatomical pathology
- medical microbiology
- clinical biochemistry
- transfusions and transplantation science



Australian Institute of Medical Scientists

RMIT's Bachelor of Biomedical Science (Laboratory Medicine) is the only Victorian degree accredited by the Australian Institute of Medical Scientists (AIMS)



Study abroad

Laboratory medicine provides opportunities for students to travel overseas and undertake 10 to 13 weeks of professional practice in an approved lab



For more information visit rmit.edu.au/biomedical-sciences

Biomedical Sciences

BIOMEDICAL SCIENCE												
	🕒	📍	📅	\$ 2022	📄	IELTS	✓	📝	🔄	🔗	🗑️	
Bachelor of Biomedical Science (Laboratory Medicine)	4 years	Bundoora	Feb	\$40,320	BP147	6.5 (6.0)	65%	-	-	-		
Bachelor of Biomedical Science	3 years	Bundoora	Feb Jul	\$40,320	BP231	6.5 (6.0)	65%	-	Y	B		
Bachelor of Science (Biotechnology)/ Bachelor of Biomedical Science	4 years	Bundoora	Feb	\$36,480	BP293	6.5 (6.0)	70%	-	-	E		
Master of Laboratory Medicine	2 years	Bundoora	Feb Jul	\$41,280	MC158	6.5 (6.0)	2.0	-	-	I, Z		

PHARMACY												
	🕒	📍	📅	\$ 2022	📄	IELTS	✓	📝	🔄	🔗	🗑️	
Bachelor of Engineering (Chemical Engineering) (Honours)/Bachelor of Pharmaceutical Sciences	5 years	City/ Bundoora	Feb Jul	\$44,376	BH122	6.5 (6.0)	70%	-	-	E, O		
Bachelor of Pharmaceutical Sciences	3 years	Bundoora	Feb	\$40,320	BP311	6.5 (6.0)	65%	-	Y	-		

HONOURS												
	🕒	📍	📅	\$ 2022	📄	IELTS	✓	📝	🔄	🔗	🗑️	
Bachelor of Pharmacy (Honours)	4 years	Bundoora	Feb	\$44,160	BH102	7.0 (6.5)	65%	-	Y	S, O		
Bachelor of Health and Biomedical Sciences (Honours)	1 year	Bundoora	Feb	\$40,320	BH058	6.5 (6.0)	2.5	-	-	K		

RESEARCH												
	🕒	📍	📅	\$ 2022	📄	IELTS	✓	📝	🔄	🔗	🗑️	
Master of Science (Biomedical Science)	2 years	Bundoora	All year	\$34,560	MR227	6.5 (6.0)	60%	-	Y	FF		
Master of Science (Laboratory and Clinical Science)	2 years	Bundoora	All year	\$31,680	MR234	6.5 (6.0)	60%	-	Y	FF		
PhD (Biomedical Science)	4 years	Bundoora	All year	\$3,4560	DR227	6.5 (6.0)	70% or 80%	-	-	FF		
PhD (Laboratory and Clinical Science)	4 years	Bundoora	All year	\$31,680	DR234	6.5 (6.0)	70% or 80%	-	-	FF		

Footnotes

- B July entry may be available to students who are granted course/subject exemptions or advanced entry based on previous study.
- E This course incurs additional costs.
- I A part of this course will be taught at the RMIT City Campus.
- K This is a one-year full time honour degree that is available for high performing students to apply after finishing their undergraduate degree in the relevant discipline. An honours degree allows you to deepen your knowledge and develop your research, analytical and communication skills, and it is a pathway into postgraduate and higher degree by research studies.
- O This is a combined bachelor and honours degree, and entry is based on senior high school qualifications. Upon completion of this program, students graduate with honours without having to undertake an additional year of study. An honours degree allows you to deepen your knowledge and develop your research, analytical and communication skills, and it is a pathway into postgraduate and higher degree by research studies.
- S This course has limited spaces and applications must be submitted by 1 August (in any given year) in order to be considered.
- Z The main intake for this course is in July. February entry may be available to students who are granted course/subject exemptions or advanced entry based on previous study or students with an undergraduate degree in laboratory medicine.
- FF Refer to rmit.edu.au/how-to-apply-for-research for reference.

KEY:

- 🕒 Duration 📍 Campus 📅 Intake/s \$ 2022 2022 annual fee (\$AU) IELTS Academic IELTS Overall Band (Individual Band) – subject to change
 - 📄 RMIT Code ✓ Entry requirement (min average % or GPA) 📝 Selection task 🔄 Pathways 🔗 Notes
- For the most up-to-date information regarding RMIT courses and pathways, please visit rmit.edu.au

Building

BUILDING AND TRADES												
	🕒	📍	📅	\$ 2022	📄	IELTS	✓	📝	🔄	🔗	🗑️	
Diploma of Building and Construction (Building)	2 years	City	Feb Jul	\$19,250	C5256	5.5 (5.0)	50%	-	-	-		

CIVIL ENGINEERING												
See page 24 for details												

CONSTRUCTION AND PROJECT MANAGEMENT												
	🕒	📍	📅	\$ 2022	📄	IELTS	✓	📝	🔄	🔗	🗑️	
Bachelor of Applied Science (Construction Management) (Honours)	4 years	City	Feb Jul	\$37,440	BH114	6.5 (6.0)	65%	-	Y	O		
Bachelor of Applied Science (Project Management) (Honours)	4 years	City	Feb Jul	\$37,440	BH112	6.5 (6.0)	65%	-	Y	O		
Graduate Certificate in Project Management	0.5 year	City	Feb Jul	\$21,600*	GC042	6.5 (6.0)	-	-	-	-		
Graduate Diploma in Project Management	1 year	City	Feb Jul	\$43,200	GD194	6.5 (6.0)	-	-	Y	-		
Master of Project Management	2 years	City	Feb Jul	\$43,200	MC210	6.5 (6.0)	-	-	Y	-		

PROPERTY AND VALUATION												
	🕒	📍	📅	\$ 2022	📄	IELTS	✓	📝	🔄	🔗	🗑️	
Bachelor of Applied Science (Property and Valuation) (Honours)	4 years	City	Feb Jul	\$37,440	BH113	6.5 (6.0)	65%	-	Y	O		
Graduate Certificate in Property	0.5 year	City	Feb Jul	\$20,640*	GC051	6.5 (6.0)	-	-	-	-		
Graduate Diploma in Property	1 year	City	Feb Jul	\$41,280	GD090	6.5 (6.0)	-	-	Y	-		
Master of Property	2 years	City	Feb Jul	\$41,280	MC212	6.5 (6.0)	-	-	Y	-		

SURVEYING AND GEOSPATIAL SCIENCES												
See page 34 for details												

SUSTAINABLE PRACTICES												
	🕒	📍	📅	\$ 2022	📄	IELTS	✓	📝	🔄	🔗	🗑️	
Diploma of Conservation and Land Management	2 years	City	Feb	\$19,250	C5367	5.5 (5.0)	50%	-	-	-		
Bachelor of Environment and Society	3 years	City	Feb	\$30,720	BP000	6.5 (6.0)	70%	-	-	E		
Graduate Certificate in Energy Efficient and Sustainable Building	0.5 year	City	Feb Jul	\$20,640*	GC163	6.5 (6.0)	-	-	-	-		
Graduate Diploma in Energy Efficient and Sustainable Building	1 year	City	Feb Jul	\$41,280	GD189	5.5 (5.0)	-	-	Y	-		
Master of Energy Efficient and Sustainable Building	2 years	City	Feb Jul	\$41,280	MC209	6.5 (6.0)	-	-	Y	-		

URBAN PLANNING												
	🕒	📍	📅	\$ 2022	📄	IELTS	✓	📝	🔄	🔗	🗑️	
Bachelor of Urban and Regional Planning (Honours)	4 years	City	Feb Jul	\$30,720	BH108	6.5 (6.0)	70%	-	-	O		
Master of Urban Planning and Environment	2 years	City	Feb Jul	\$33,600	MC221	6.5 (6.0)	2.5	-	-	-		

RESEARCH												
	🕒	📍	📅	\$ 2022	📄	IELTS	✓	📝	🔄	🔗	🗑️	
Master of Social Science (Global, Urban and Social Studies)	2 years	-	All year	\$29,760	MR210	6.5 (6.0)	60%	-	-	FF		
Master of Applied Science (Built Environment)	2 years	-	All year	\$32,640	MR212	6.5 (6.0)	60%	-	-	FF		
PhD (Built Environment)	4 years	-	All year	\$32,640	DR212	6.5 (6.0)	70%	-	-	FF		
PhD (Global, Urban and Social Studies)	4 years	-	All year	\$29,760	DR210	6.5 (6.0)	70%	-	-	FF		

Footnotes

- E This course incurs additional costs.
- O This is a combined bachelor and honours degree, and entry is based on senior high school qualifications. Upon completion of this program, students graduate with honours without having to undertake an additional year of study. An honours degree allows you to deepen your knowledge and develop your research, analytical and communication skills, and it is a pathway into postgraduate and higher degree by research studies.
- FF Refer to rmit.edu.au/how-to-apply-for-research for reference.
- * Total fee.

1 of 3

Australian universities ranked as above world standard in building research¹

250+

employers of choice

RMIT's property, construction and project management courses maintain relationships with 250+ industry connections through our Employer of Choice program



Industry accreditation

RMIT's courses are accredited by:

- Australian Institute of Building
- Royal Institute of Chartered Surveyors
- Chartered Institute of Building
- Australian Institute of Quantity Surveyors



New technologies

RMIT's construction management courses are among the first in the world to embed 4K spherical virtual technology and building information modelling into the curriculum

¹ Excellence in Research Australia 2018 report by the Australian Research Council



For more information visit rmit.edu.au/building

\$1.8M+

allocated by RMIT Activator to fund 80 student start-ups since 2015

#80

RMIT's MBA in Operations Management is ranked 80th in the world¹



RMIT Blockchain Innovation Hub

The world's first research centre on the social science of blockchain in simulated environments



Own your future

RMIT offers electives designed to build your skills for self-employment

¹ QS MBA Career Specialization rankings 2021



For more information visit rmit.edu.au/business

Business

ACCOUNTING

	🕒	📍	📅	\$ 2022	📄	IELTS	✓	📝	📈	🔗
Advanced Diploma of Accounting	1 year	City	Feb Jul	\$22,250*	C6163	5.5 (5.0)	-	-	Y	A
Certificate IV in Accounting and Bookkeeping	0.5 year	City	Feb Jul	\$11,500*	C4398	5.5 (5.0)	-	-	-	-
Diploma of Accounting	0.5 year	City	Feb Jul	\$11,500*	C5390	5.5 (5.0)	-	-	Y	A
Bachelor of Business (Accountancy)	3 years	City	Feb Jul	\$39,360	BP254	6.5 (6.0)	65%	-	Y	-
Bachelor of Business (Financial Planning) / Bachelor of Business (Accountancy)	4 years	City	Feb Jul	\$39,360	BP313	6.5 (6.0)	75%	-	Y	-
Bachelor of Business (Financial Planning)	3 years	City	Feb Jul	\$39,360	BP314	6.5 (6.0)	65%	-	Y	-
Bachelor of Business (Enterprise and Innovation)	3 years	City	Feb Jul	\$39,360	BP341	6.5 (6.0)	75%	-	-	-
Bachelor of Business (Blockchain Enabled Business)	3 years	City	Feb Jul	\$39,360	BP334	6.5 (6.0)	65%	-	-	-
Bachelor of Business (Professional Accountancy)	4 years	City	Feb Jul	\$39,360	BP129	6.5 (6.0)	75%	-	Y	D
Graduate Certificate in Blockchain Enabled Business	0.5 year	City	Feb Jul	\$21,120*	GC180	6.5 (6.0)	-	-	-	-
Graduate Certificate in Professional Accounting	0.5 year	City	Feb Jul	\$21,120*	GC119	6.5 (6.0)	-	-	-	G
Master of Blockchain Enabled Business	1.5 years	City	Feb Jul	\$42,240	MC279	6.5 (6.0)	-	-	Y	-
Master of Professional Accounting	1.5 years 2 years	City	Feb Jul	\$42,240	MC194	6.5 (6.0)	-	-	Y	Q

BUSINESS AND ADMINISTRATION

	🕒	📍	📅	\$ 2022	📄	IELTS	✓	📝	📈	🔗
Diploma of Commerce	1 year	City	Feb Jul	\$29,760*	DP003	5.5 (5.0)	50%	-	-	N
Associate Degree in Business	2 years	City	Feb Jul	\$30,720	AD010	6.0 (5.5)	50%	-	Y	-
Graduate Certificate of Commerce	0.5 year	City	Feb Jul	\$21,120*	GC104	6.5 (6.0)	-	-	-	G
Master of Commerce	1.5 years 2 years	City	Feb Jul	\$42,240	MC205	6.5 (6.0)	-	-	Y	Q

ECONOMICS AND FINANCE

	🕒	📍	📅	\$ 2022	📄	IELTS	✓	📝	📈	🔗
Bachelor of Business (Digital Business)	3 years	City	Feb Jul	\$39,360	BP324	6.5 (6.0)	65%	-	Y	-
Bachelor of Business (Economics and Finance) (Applied)	4 years	City	Feb Jul	\$39,360	BP134	6.5 (6.0)	75%	-	Y	D
Bachelor of Business (Economics and Finance)	3 years	City	Feb Jul	\$39,360	BP251	6.5 (6.0)	65%	-	Y	-
Bachelor of Business (Financial Planning)	3 years	City	Feb Jul	\$39,360	BP314	6.5 (6.0)	65%	-	Y	-
Graduate Certificate in Finance	0.5 year	City	Feb Jul	\$21,120*	GC048	6.5 (6.0)	-	-	-	G
Master of Finance	1.5 years 2 years	City	Feb Jul	\$42,240	MC201	6.5 (6.0)	-	-	Y	Q

ENGINEERING MANAGEMENT

See page 25 for details

Footnotes

- A This course is only available for advanced entry.
- D This course includes a work-integrated learning (WIL) component, the Cooperative Education program, undertaken in the third year of the course. It is a one-year work placement (paid employment of at least 34 weeks' duration). The fees for this year are 25 per cent of the annual tuition fee.
- G Please note that the fee advertised is for the actual course duration advertised.
- N This course is a Higher Education diploma.
- Q Students admitted with a degree or higher level of qualification in business (or a related discipline) may complete this course in 1.5 years.
- W Classes for this course are delivered across the City and Bundoora campuses. Students may be required to attend both locations.

* Total fee.

KEY:

🕒 Duration 📍 Campus 📅 Intake/s \$ 2022 2022 annual fee (\$AU) IELTS Academic IELTS Overall Band (Individual Band) – subject to change 📄 RMIT Code ✓ Entry requirement (min average % or GPA) 📝 Selection task 📈 Pathways 🔗 Notes

For the most up-to-date information regarding RMIT courses and pathways, please visit rmit.edu.au

ENTREPRENEURSHIP

	🕒	📍	📅	\$ 2022	📄	IELTS	✓	📝	📈	🔗
Bachelor of Business (Entrepreneurship)	3 years	City	Feb Jul	\$39,360	BP030	6.5 (6.0)	65%	-	Y	-

INFORMATION SYSTEMS

	🕒	📍	📅	\$ 2022	📄	IELTS	✓	📝	📈	🔗
Bachelor of Business (Information Systems) (Applied)	4 years	City	Feb Jul	\$39,360	BP138	6.5 (6.0)	75%	-	Y	D
Bachelor of Business (Information Systems)	3 years	City	Feb Jul	\$39,360	BP308	6.5 (6.0)	65%	-	Y	-
Graduate Certificate in Business Information Technology	0.5 year	City	Feb Jul	\$21,120*	GC099	6.5 (6.0)	-	-	-	G
Master of Business Information Technology	1.5 years 2 years	City	Feb Jul	\$42,240	MC200	6.5 (6.0)	-	-	Y	Q

INTERNATIONAL BUSINESS

	🕒	📍	📅	\$ 2022	📄	IELTS	✓	📝	📈	🔗
Advanced Diploma of International Business	1 year	City	Feb Jul	\$11,500*	C6166	5.5 (5.0)	-	-	Y	A
Bachelor of Business (International Business)	3 years	City	Feb Jul	\$39,360	BP253	6.5 (6.0)	65%	-	Y	-
Bachelor of Business (International Business) (Applied)	4 years	City	Feb Jul	\$39,360	BP027	6.5 (6.0)	75%	-	Y	D
Graduate Certificate in International Business	0.5 year	City	Feb Jul	\$21,120*	GC153	6.5 (6.0)	-	-	-	G
Master of International Business	1.5 years 2 years	City	Feb Jul	\$42,240	MC192	6.5 (6.0)	-	-	Y	Q

MANAGEMENT AND LEADERSHIP

	🕒	📍	📅	\$ 2022	📄	IELTS	✓	📝	📈	🔗
Bachelor of Applied Science (Aviation) / Bachelor of Business (Management)	4 years	City	Feb Jul	\$46,440	BP284	6.5 (6.0)	70%	-	-	-
Bachelor of Business (Human Resource Management)	3 years	City	Feb Jul	\$39,360	BP276	6.5 (6.0)	65%	-	Y	-
Bachelor of Business (Management)	3 years	City	Feb Jul	\$39,360	BP217	6.5 (6.0)	65%	-	Y	-
Bachelor of Environmental Science/ Bachelor of Business (Management)	4 years	City	Feb Jul	\$41,040	BP161	6.5 (6.0)	70%	-	-	-
Bachelor of Science (Applied Science)/ Bachelor of Business (Management)	4 years	City	Feb Jul	\$41,040	BP305	6.5 (6.0)	70%	-	-	-
Bachelor of Science (Food Technology)/ Bachelor of Business (Management)	4 years	City/ Bundoora	Feb Jul	\$41,040	BP289	6.5 (6.0)	70%	-	-	W
Graduate Certificate in Business Administration	0.5 year	City	Feb Jul	\$23,520*	GC047	6.5 (6.0)	1	-	-	-
Graduate Certificate in Business Administration (Executive)	0.5 year	City	Feb Jul	\$24,480*	GC129	6.5 (6.0)	2	Y	-	G
Graduate Certificate in Human Resource Management	0.5 year	City	Feb Jul	\$21,120*	GC161	6.5 (6.0)	-	-	-	-
Executive Master of Business Administration	1.5 years	City	Feb Jul	\$48,960	MC162	6.5 (6.0)	2	Y	Y	-
Master of Business Administration	1.5 years 2 years	City	Feb Jul	\$47,040	MC199	6.5 (6.0)	1	-	Y	Q
Master of Human Resource Management	1.5 years 2 years	City	Feb Jul	\$42,240	MC263	6.5 (6.0)	-	-	Y	Q

MARKETING

	🕒	📍	📅	\$ 2022	📄	IELTS	✓	📝	📈	🔗
Bachelor of Business (Marketing)	3 years	City	Feb Jul	\$39,360	BP252	6.5 (6.0)	65%	-	Y	-
Bachelor of Business (Marketing) (Applied)	4 years	City	Feb Jul	\$39,360	BP141	6.5 (6.0)	75%	-	Y	D
Graduate Certificate in Marketing	0.5 year	City	Feb Jul	\$21,120*	GC053	6.5 (6.0)	-	-	-	G
Master of Advertising	2 years	City	Feb Jul	\$34,560	MC249	6.5 (6.0)	2.5	-	-	-
Master of Marketing	1.5 years 2 years	City	Feb Jul	\$42,240	MC197	6.5 (6.0)	-	-	Y	Q

MATHEMATICS, STATISTICS AND ANALYTICS

See page 33 for details

SUPPLY CHAIN AND LOGISTICS										
	🕒	📍	📅	\$ 2022	📄	IELTS	✓	📝	📈	🔗
Bachelor of Business (Logistics and Supply Chain Management) (Applied)	4 years	City	Feb Jul	\$39,360	BP143	6.5 (6.0)	75%	-	Y	D
Bachelor of Business (Logistics and Supply Chain Management)	3 years	City	Feb Jul	\$39,360	BP255	6.5 (6.0)	65%	-	Y	-
Graduate Certificate in Supply Chain and Logistics Management	0.5 year	City	Feb Jul	\$21,120	GC055	6.5 (6.0)	-	-	-	G
Master of Supply Chain and Logistics Management	1.5 years 2 years	City	Feb Jul	\$42,240	MC198	6.5 (6.0)	-	-	Y	Q
HONOURS										
	🕒	📍	📅	\$ 2022	📄	IELTS	✓	📝	📈	🔗
Bachelor of Business (Honours)	1 year	City	Feb	\$39,360	BH064	6.5 (6.0)	2.5	Y	-	K
Bachelor of Engineering (Advanced Manufacturing and Mechatronics) (Honours) / Bachelor of Business (International Business)	5 years	City	Feb Jul	\$45,408	BH086	6.5 (6.0)	70%	-	-	O
RESEARCH										
	🕒	📍	📅	\$ 2022	📄	IELTS	✓	📝	📈	🔗
Master of Business (Accountancy)	2 years	-	All year	\$32,640	MR200	6.5 (6.0)	-	-	Y	FF
Master of Business (Business Information Systems)	2 years	-	All year	\$32,640	MR201	6.5 (6.0)	-	-	Y	FF
Master of Business (Business and Law)	2 years	-	All year	\$32,640	MR205	6.5 (6.0)	-	-	Y	FF
Master of Business (Economics, Finance and Marketing)	2 years	-	All year	\$32,640	MR203	6.5 (6.0)	-	-	Y	FF
Master of Business (Management)	2 years	-	All year	\$32,640	MR204	6.5 (6.0)	-	-	Y	FF
Master of Business (Supply Chain and Logistics)	2 years	-	All year	\$32,640	MR202	6.5 (6.0)	-	-	Y	FF
PhD (Accountancy)	4 years	-	All year	\$36,480	DR200	6.5 (6.0)	-	-	Y	FF
PhD (Business Information Systems)	4 years	-	All year	\$36,480	DR201	6.5 (6.0)	-	-	Y	FF
PhD (Business)	4 years	-	All year	\$36,480	DR205	6.5 (6.0)	-	-	Y	FF
PhD (Economics, Finance and Marketing)	4 years	-	All year	\$36,480	DR203	6.5 (6.0)	-	-	Y	FF
PhD (Law)	4 years	-	All year	\$36,480	DR206	6.5 (6.0)	-	-	Y	FF
PhD (Management)	4 years	-	All year	\$36,480	DR204	6.5 (6.0)	-	-	Y	FF
PhD (Supply Chain and Logistics)	4 years	-	All year	\$36,480	DR202	6.5 (6.0)	-	-	Y	FF

Footnotes

- D This course includes a work-integrated learning (WIL) component, the Cooperative Education program, undertaken in the third year of the course. It is a one-year work placement (paid employment of at least 34 weeks' duration). The fees for this year are 25 per cent of the annual tuition fee.
- G Please note that the fee advertised is for the course duration advertised.
- K This is a one-year full time honour degree that is available for high performing students to apply after finishing their undergraduate degree in the relevant discipline. An honours degree allows you to deepen your knowledge and develop your research, analytical and communication skills, and it is a pathway into postgraduate and higher degree by research studies.
- O This is a combined bachelor and honours degree, and entry is based on senior high school qualifications. Upon completion of this program, students graduate with honours without having to undertake an additional year of study. An honours degree allows you to deepen your knowledge and develop your research, analytical and communication skills, and it is a pathway into postgraduate and higher degree by research studies.
- Q Students admitted with a degree or higher level of qualification in business (or a related discipline) may complete this course in 1.5 years.
- FF Refer to rmit.edu.au/how-to-apply-for-research for reference.

KEY:

- 🕒 Duration 📍 Campus 📅 Intake/s \$ 2022 2022 annual fee (\$AU) IELTS Academic IELTS Overall Band (Individual Band) – subject to change
 📄 RMIT Code ✓ Entry requirement (min average % or GPA) 📝 Selection task 📈 Pathways 🔗 Notes
 For the most up-to-date information regarding RMIT courses and pathways, please visit rmit.edu.au

Communication

ADVERTISING										
	🕒	📍	📅	\$ 2022	📄	IELTS	✓	📝	📈	🔗
Bachelor of Communication (Advertising)	3 years	City	Feb Jul	\$34,560	BP219	6.5 (6.0)	65%	Y	-	B
Master of Advertising	2 years	City	Feb Jul	\$34,560	MC249	6.5 (6.0)	2.5	-	-	-
COMMUNICATION AND WRITING										
	🕒	📍	📅	\$ 2022	📄	IELTS	✓	📝	📈	🔗
Associate Degree in Professional Writing and Editing	2 years	City	Feb	\$31,680	AD016	6.0 (5.5)	60%	Y	-	C
Bachelor of Communication (Journalism)	3 years	City	Feb Jul	\$34,560	BP220	6.5 (6.0)	65%	-	Y	B
Bachelor of Communication (Professional Communication)	2.5 years 3 years	City	Feb Jul	\$43,776 (2.5 years), \$36,480 (3 years)	BP222	6.5 (6.0)	65%	-	-	H, L
Bachelor of Communication (Public Relations)	3 years	City	Feb Jul	\$34,560	BP223	6.5 (6.0)	65%	-	Y	C, B
Bachelor of Arts (Creative Writing)	3 years	City	Feb Jul	\$34,560	BP257	6.5 (6.0)	65%	Y	Y	J, B
Graduate Diploma in Journalism	1 year	City	Feb	\$27,840	GD074	7.0 (6.5)	-	Y	-	-
Master of Communication	2 years	City	Feb Jul	\$36,480	MC248	6.5 (6.0)	2.5	-	-	-
Master of Writing and Publishing	2 years	City	Feb Jul	\$34,560	MC262	7.0 (6.5)	2.5	-	-	-
GRAPHIC AND COMMUNICATION DESIGN										
See page 22 for details										
MARKETING										
See page 19 for details										
LANGUAGES, TRANSLATING AND INTERPRETING										
See page 35 for details										
HONOURS										
	🕒	📍	📅	\$ 2022	📄	IELTS	✓	📝	📈	🔗
Bachelor of Media and Communication (Honours)	1 year	City	Feb	\$34,560	BH066	6.5 (6.0)	3	Y	-	K
RESEARCH										
	🕒	📍	📅	\$ 2022	📄	IELTS	✓	📝	📈	🔗
Master of Design (Media and Communication)	2 years	-	All year	\$32,640	MR211	6.5 (6.0)	60%	-	-	FF
PhD (Media and Communication)	4 years	-	All year	\$32,640	DR211	6.5 (6.0)	70%	-	-	FF

Footnotes

- B July entry may be available to students who are granted course/subject exemptions or advanced entry based on previous study.
- C This course includes a professional work placement.
- H This is an accelerated course. Students are required to complete one summer semester (comprising 48 credit points) during their degree.
- J Please note that whilst the Bachelor of Arts (Creative Writing) program is open to international students as a 3 year degree, the program invites applications from students who hold relevant Diplomas, Advanced Diplomas, Associate degrees or industry experience equivalent for entry into the 2nd year.
- K This is a one-year full time honour degree that is available for high performing students to apply after finishing their undergraduate degree in the relevant discipline. An honours degree allows you to deepen your knowledge and develop your research, analytical and communication skills, and it is a pathway into postgraduate and higher degree by research studies.
- L This version of the media course is meant for year one commencement for July entry. The course structure is accelerated. It consists of six semesters over 2.5 calendar years by undertaking four first-year courses in intensive mode over spring (Nov/Dec) and (Jan/Feb) summer semesters.
- FF Refer to rmit.edu.au/how-to-apply-for-research for reference.

#3

in Australia for communication and media studies¹

#41

in the world for communication and media studies¹

#1

in Australia in the field of advertising²

#5

in the world in the field of advertising²



UNESCO City of Literature

Study in Melbourne, the second city in the world to be designated a UNESCO City of Literature³



Excellence in research

RMIT's research in communication and media studies is rated as well above world standard, one of only two Australian universities to achieve this rating⁴

¹ QS World University Ranking by Subject 2021

² YoungGuns top 10 advertising schools worldwide

³ UNESCO.org – In 2008, Melbourne became UNESCO's second City of Literature

⁴ Excellence in Research Australia 2018 report by the Australian Research Council



For more information visit rmit.edu.au/communication

#1

in Australia for art and design¹

#15

in the world for art and design¹

#8

in the world for animation²



Design Partner of the National Gallery of Victoria



Official Research Partner

of ACMI: the national museum of screen culture



Exchange partnerships

with prestigious universities such as Parsons New School of Design in NYC

Design and Game Design

DESIGN, INNOVATION AND TECHNOLOGY										
	🕒	📍	📅	\$ 2022	📄	IELTS	✓	📝	📈	🔗
Graduate Certificate of Design Innovation and Technology	0.5 year	City	Feb Jul	\$21,120	GC192	6.5 (6.0)	-	-	-	-
Master of Design Innovation and Technology	2 years	City	Feb Jul	\$42,240	MC231	6.5 (6.0)	-	-	Y	-
GAMES AND INTERACTIVE MEDIA										
	🕒	📍	📅	\$ 2022	📄	IELTS	✓	📝	📈	🔗
Bachelor of Design (Games)	3 years	City	Feb Jul	\$34,560	BP214	6.5 (6.0)	65%	Y	Y	B
GRAPHIC AND COMMUNICATION DESIGN										
	🕒	📍	📅	\$ 2022	📄	IELTS	✓	📝	📈	🔗
Certificate IV in Design	0.5 year	Brunswick	Feb Jul	\$17,500*	C4382	5.5 (5.0)	50%	-	-	-
Diploma of Graphic Design	1 year	Brunswick	Feb Jul	\$22,750*	C5359	5.5 (5.0)	50%	Y	Y	-
Associate Degree in Graphic Design	2 years	Brunswick	Feb Jul	\$31,680	AD022	6.0 (5.5)	60%	Y	Y	-
Bachelor of Design (Communication Design)	3 years	City	Feb Jul	\$39,360	BP115	6.5 (6.0)	65%	Y	Y	B, E
Master of Communication Design	2 years	City	Feb Jul	\$36,480	MC250	6.5 (6.0)	-	Y	-	-
INDUSTRIAL, FURNITURE AND PRODUCT DESIGN										
	🕒	📍	📅	\$ 2022	📄	IELTS	✓	📝	📈	🔗
Diploma of Product Design	2 years	Brunswick	Feb Jul	\$22,750*	C5382	5.5 (5.0)	50%	Y	Y	-
Associate Degree in Design (Furniture)	2 years	City	Feb	\$32,640	AD007	6.0 (5.5)	60%	Y	Y	-
Bachelor of Industrial Design (Honours)	4 years	City/ Brunswick	Feb Jul	\$42,240	BH104	6.5 (6.0)	70%	Y	Y	O
Bachelor of Engineering (Sustainable Systems Engineering) (Honours) / Bachelor of Industrial Design (Honours)	5 years	City/ Bundoora	Feb Jul	\$45,408	BH100	6.5 (6.0)	70%	-	-	O, W
Bachelor of Engineering (Mechanical Engineering) (Honours) / Bachelor of Industrial Design (Honours)	5 years	City/ Bundoora	Feb	\$45,408	BH093	6.5 (6.0)	70%	-	-	O, W
RESEARCH										
	🕒	📍	📅	\$ 2022	📄	IELTS	✓	📝	📈	🔗
Master of Design (Media and Communication)	2 years	-	All year	\$32,640	MR211	6.5 (6.0)	60%	-	-	FF
Master of Design (Design)	2 years	-	All year	\$38,400	MR235	6.5 (6.0)	60%	-	-	FF
PhD (Design)	4 years	-	All year	\$38,400	DR235	6.5 (6.0)	70%	-	-	FF
PhD (Media and Communication)	4 years	-	All year	\$32,640	DR211	6.5 (6.0)	70%	-	-	FF

Footnotes

- B July entry may be available to students who are granted subject exemptions or advanced entry based on previous study.
- E This course incurs additional costs.
- O This is a combined bachelor and honours degree, and entry is based on senior high school qualifications. Upon completion of this program, students graduate with honours without having to undertake an additional year of study. An honours degree allows you to deepen your knowledge and develop your research, analytical and communication skills, and it is a pathway into postgraduate and higher degree by research studies.
- W Classes for this course are delivered across the City and Bundoora campuses. Students may be required to attend both locations.
- FF Refer to rmit.edu.au/how-to-apply-for-research for reference.
- * Total fee.

KEY:

- 🕒 Duration 📍 Campus 📅 Intake/s \$ 2022 2022 annual fee (\$AU) IELTS Academic IELTS Overall Band (Individual Band) – subject to change
 - 📄 RMIT Code ✓ Entry requirement (min average % or GPA) 📝 Selection task 📈 Pathways 🔗 Notes
- For the most up-to-date information regarding RMIT courses and pathways, please visit rmit.edu.au



For more information visit rmit.edu.au/design

Education

HEALTH AND PHYSICAL EDUCATION										
	🕒	📍	📅	\$ 2022	📄	IELTS	✓	📝	📈	🔗
Bachelor of Health, Physical Education and Sport (Secondary)	4 years	Bundoora	Feb	\$36,480	BP319	7.5**	70%	Y	-	E, C
TEACHER EDUCATION										
	🕒	📍	📅	\$ 2022	📄	IELTS	✓	📝	📈	🔗
Bachelor of Education (Early Childhood Education)	2 years	Bundoora	Feb Jul	\$29,760	BP260	6.5 (6.0)	-	-	-	DD
Bachelor of Education (Primary)	4 years	Bundoora	Feb	\$28,800	BP320	7.5**	70%	Y	-	-
Bachelor of Education (Primary and Early Childhood Education)	4 years	Bundoora	Feb	\$28,800	BP320	7.5**	70%	Y	-	-
Bachelor of Education (Primary Education and Disability Inclusion)	4 years	Bundoora	Feb	\$28,800	BP320	7.5**	70%	Y	-	-
Bachelor of Education (Primary and Physical Education/Sport)	4 years	Bundoora	Feb	\$28,800	BP320	7.5**	70%	Y	-	-
Graduate Diploma in Early Childhood Education	1 year	Bundoora	Feb Jul	\$30,720	GD204	7.0 (6.5)	-	-	-	C
Master of Teaching Practice (Primary Education)	2 years	City	Feb	\$30,720	MC219	7.5**	-	Y	-	-
Master of Teaching Practice (Secondary Education)	2 years	City	Feb	\$30,720	MC220	7.5**	-	Y	-	-
RESEARCH										
	🕒	📍	📅	\$ 2022	📄	IELTS	✓	📝	📈	🔗
Master of Education	2 years	Bundoora	All year	\$29,760	MR209	7.0 (6.5)	60%	-	-	FF
PhD (Education)	4 years	Bundoora	All year	\$29,760	DR209	7.0 (6.5)	70%	-	-	FF

Footnotes

- C This course includes a professional work placement.
- E This course incurs additional costs.
- DD This course is available for applicants who have successfully completed two years of study in an Australian bachelor's degree in education or bachelor's degree in early childhood education (or equivalent overseas qualification).
- FF Refer to rmit.edu.au/how-to-apply-for-research for reference.
- ** IELTS 7.5 (7.0 Reading, 7.0 Writing, 8.0 Listening, 8.0 Speaking).

100+

days of work-based learning during teaching placements

95%

of our recent teacher education graduates found employment, the highest rate of any Victorian institution¹

#1

RMIT has the highest graduate satisfaction rate in Victoria²



Star graduates

Graduates of our health and physical education course include two AFLW captains, an Olympic silver medallist and a Commonwealth Games marathon runner

¹ QILT.edu.au – Graduates Outcomes Survey 2017-19 Comparison of all Victorian institutions offering teacher education at an undergraduate level

² QILT.edu.au – Course Experience Questionnaire 2018-19 Comparison of all Victorian institutions offering teacher education at an undergraduate level



For more information visit rmit.edu.au/education

Top 100

Among the world's top 100 universities in civil and structural engineering¹



Pathways

A range of RMIT advanced diplomas and associate degrees provide pathways into engineering bachelor degrees



Flexible first year

Explore different engineering fields through elective options in first year, preparing you to choose a specialisation in second year



Globally recognised

As a signatory to the International Engineering Alliance, RMIT's degrees are recognised by the Washington Accord

¹ QS World University Rankings by Subject 2021

Engineering

ENGINEERING (HONOURS)

	🕒	📍	📅	\$ 2022	📄	IELTS	✓	📝	🔄	📌
Bachelor of Engineering (Honours)	4 years	City	Feb	\$41,280	BH126	6.5 (6.0)	65%	-	-	O

AEROSPACE ENGINEERING AND AVIATION

	🕒	📍	📅	\$ 2022	📄	IELTS	✓	📝	🔄	📌
Advanced Diploma of Engineering (Aeronautical)	2 years	City	Feb	\$19,250	C6131	5.5 (5.0)	50%	-	-	-
Associate Degree in Aviation (Professional Pilots)	2 years	Point Cook / Bendigo	Feb Jul	\$71,040	AD023	6.0 (5.5)	50%	-	-	T, CC
Associate Degree in Engineering Technology	2 years	City	Feb Jul	\$34,560	AD026	6.0 (5.5)	50%	-	-	-
Bachelor of Applied Science (Aviation)	3 years	City	Feb Jul	\$41,280	BP070	6.5 (6.0)	65%	-	Y	E, R
Bachelor of Applied Science (Aviation) / Bachelor of Business (Management)	4 years	City	Feb Jul	\$46,440	BP284	6.5 (6.0)	70%	-	-	-
Bachelor of Engineering (Aerospace Engineering) (Honours)	4 years	City / Bundoora	Feb Jul	\$41,280	BH078	6.5 (6.0)	65%	-	Y	O, W
Bachelor of Engineering (Aerospace Engineering) (Honours) / Bachelor of Business (Management)	5 years	City / Bundoora	Feb Jul	\$45,408	BH082	6.5 (6.0)	70%	-	-	O, W
Master of Engineering (Aerospace)	2 years	City / Bundoora	Feb Jul	\$42,240	MC225	6.5 (6.0)	2.0	-	Y	W
Master of Engineering (Airworthiness)	1 year	City / Bundoora	Feb Jul	\$42,240	MC238	6.5 (6.0)	2.0	-	-	W
Master of Science (Aviation)	2 years	City	Feb Jul	\$42,240	MC264	6.5 (6.0)	2.0	-	Y	-

BIOMEDICAL ENGINEERING

	🕒	📍	📅	\$ 2022	📄	IELTS	✓	📝	🔄	📌
Bachelor of Engineering (Biomedical Engineering) (Honours)	4 years	City / Bundoora	Feb Jul	\$41,280	BH069	6.5 (6.0)	65%	-	-	B, O, W

CHEMICAL ENGINEERING

	🕒	📍	📅	\$ 2022	📄	IELTS	✓	📝	🔄	📌
Bachelor of Engineering (Chemical Engineering) (Honours)	4 years	City	Feb Jul	\$41,280	BH079	6.5 (6.0)	65%	-	-	O
Bachelor of Engineering (Chemical Engineering) (Honours) / Bachelor of Business (Management)	5 years	City	Feb Jul	\$44,376	BH085	6.5 (6.0)	70%	-	-	O
Bachelor of Engineering (Chemical Engineering) (Honours) / Bachelor of Pharmaceutical Sciences	5 years	City / Bundoora	Feb Jul	\$44,376	BH122	6.5 (6.0)	70%	-	-	O, W
Bachelor of Science (Applied Chemistry) / Bachelor of Engineering (Chemical Engineering) (Honours)	5 years	City	Feb	\$36,480	BH098	6.5 (6.0)	70%	-	-	O

CIVIL ENGINEERING

	🕒	📍	📅	\$ 2022	📄	IELTS	✓	📝	🔄	📌
Advanced Diploma of Engineering Technology (Civil Engineering Design)	2 years	City	Feb Jul	\$19,250	C6162	5.5 (5.0)	50%	-	-	-
Associate Degree in Engineering Technology	2 years	City	Feb Jul	\$34,560	AD026	6.0 (5.5)	50%	-	-	-
Bachelor of Engineering (Civil and Infrastructure) (Honours)	4 years	City / Bundoora	Feb Jul	\$41,280	BH077	6.5 (6.0)	65%	-	Y	O, W
Bachelor of Engineering (Civil and Infrastructure) (Honours) / Bachelor of Business (Management)	5 years	City / Bundoora	Feb Jul	\$44,376	BH088	6.5 (6.0)	70%	-	-	O, W
Master of Engineering (Civil Engineering)	2 years	City	Feb Jul	\$42,240	MC257	6.5 (6.0)	2.0	-	-	-

Footnotes

- B July entry may be available to students who are granted course/subject exemptions or advanced entry based on previous study.
- E This course incurs additional costs.
- O This is a combined bachelor and honours degree, and entry is based on senior high school qualifications. Upon completion of this program, students graduate with honours without having to undertake an additional year of study. An honours degree allows you to deepen your knowledge and develop your research, analytical and communication skills, and it is a pathway into postgraduate and higher degree by research studies.
- R This course plan includes flight training and has the additional objective of training students to achieve competency as a pilot, leading ultimately to the issuance of a Commercial Pilot Licence (CPL).
- T This fee includes the course's maximum allotted flight hours. If students require training above the allotted flight hours, a further fee will apply. Furthermore, students for this course will also attract additional costs. A full list of material and other fees can be found at: rmit.edu.au/other-expenses
- W Classes for this course are delivered across the City and Bundoora campuses. Students may be required to attend both locations. CC Classes for this course are delivered across the Point Cook and City campuses. Students may be required to attend both locations.
- * Total fee.

COMPUTER ENGINEERING

	🕒	📍	📅	\$ 2022	📄	IELTS	✓	📝	🔄	📌
Advanced Diploma of Computer Systems Engineering	2 years	City	Feb Jul	\$19,250	C6121	5.5 (5.0)	50%	-	-	-
Associate Degree in Engineering Technology	2 years	City	Feb Jul	\$34,560	AD026	6.0 (5.5)	50%	-	-	-
Bachelor of Engineering (Computer and Network Engineering) (Honours)	4 years	City	Feb Jul	\$41,280	BH072	6.5 (6.0)	65%	-	Y	O
Bachelor of Engineering (Computer and Network Engineering) (Honours) / Bachelor of Computer Science	5 years	City	Feb Jul	\$45,408	BH091	6.5 (6.0)	70%	-	-	O

ELECTRICAL AND ELECTRONIC ENGINEERING

	🕒	📍	📅	\$ 2022	📄	IELTS	✓	📝	🔄	📌
Advanced Diploma of Electronics and Communications Engineering	2 years	City	Feb	\$19,250	C6122	5.5 (5.0)	50%	-	-	-
Advanced Diploma of Engineering Technology – Electrical	2 years	City	Feb Jul	\$19,250	C6120	5.5 (5.0)	50%	-	-	-
Associate Degree in Engineering Technology	2 years	City	Feb Jul	\$34,560	AD026	6.0 (5.5)	50%	-	-	-
Bachelor of Engineering (Electrical and Electronic Engineering) (Honours)	4 years	City / Bundoora	Feb Jul	\$41,280	BH073	6.5 (6.0)	65%	-	Y	O, W
Bachelor of Engineering (Electrical Engineering) (Honours)	4 years	City / Bundoora	Feb Jul	\$41,280	BH075	6.5 (6.0)	65%	-	Y	O, W
Master of Engineering (Electrical Engineering)	2 years	City	Feb Jul	\$42,240	MC235	6.5 (6.0)	2.0	-	Y	-
Master of Engineering (Electronic Engineering)	2 years	City	Feb Jul	\$42,240	MC233	6.5 (6.0)	2.0	-	Y	-
Master of Engineering (Electrical and Electronic Engineering)	2 years	City / Bundoora	Feb Jul	\$42,240	MC180	6.5 (6.0)	2.0	-	Y	W

ENGINEERING MANAGEMENT

	🕒	📍	📅	\$ 2022	📄	IELTS	✓	📝	🔄	📌
Bachelor of Engineering (Aerospace Engineering) (Honours) / Bachelor of Business (Management)	5 years	City / Bundoora	Feb Jul	\$45,408	BH082	6.5 (6.0)	70%	-	-	O, W
Bachelor of Engineering (Automotive Engineering) (Honours) / Bachelor of Business (Management)	5 years	City / Bundoora	Feb	\$45,408	BH084	6.5 (6.0)	70%	-	-	O, W
Bachelor of Engineering (Chemical Engineering) (Honours) / Bachelor of Business (Management)	5 years	City	Feb Jul	\$44,376	BH085	6.5 (6.0)	70%	-	-	O
Bachelor of Engineering (Civil and Infrastructure) (Honours) / Bachelor of Business (Management)	5 years	City / Bundoora	Feb Jul	\$44,376	BH088	6.5 (6.0)	70%	-	-	O, W
Bachelor of Engineering (Mechanical Engineering) (Honours) / Bachelor of Business (Management)	5 years	City / Bundoora	Feb Jul	\$45,408	BH089	6.5 (6.0)	70%	-	-	O, W
Bachelor of Engineering (Sustainable Systems Engineering) (Honours) / Bachelor of Business (Management)	5 years	City / Bundoora	Feb Jul	\$45,408	BH092	6.5 (6.0)	70%	-	-	O, W
Master of Engineering (Management)	2 years	City	Feb Jul	\$42,240	MC226	6.5 (6.0)	2.0	-	-	-

ENVIRONMENTAL AND SUSTAINABLE ENGINEERING

	🕒	📍	📅	\$ 2022	📄	IELTS	✓	📝	🔄	📌
Associate Degree in Engineering Technology	2 years	City	Feb Jul	\$34,560	AD026	6.0 (5.5)	50%	-	-	-
Bachelor of Engineering (Environmental Engineering) (Honours)	4 years	City / Bundoora	Feb Jul	\$41,280	BH080	6.5 (6.0)	65%	-	-	O, W
Bachelor of Engineering (Sustainable Systems Engineering) (Honours) / Bachelor of Business (Management)	5 years	City / Bundoora	Feb Jul	\$45,408	BH092	6.5 (6.0)	70%	-	-	O, W
Bachelor of Engineering (Sustainable Systems Engineering) (Honours) / Bachelor of Industrial Design (Honours)	5 years	City / Bundoora	Feb Jul	\$45,408	BH100	6.5 (6.0)	70%	-	-	O, W
Bachelor of Engineering (Sustainable Systems Engineering) (Honours)	4 years	City / Bundoora	Feb Jul	\$41,280	BH076	6.5 (6.0)	65%	-	Y	O, W
Bachelor of Environmental Science / Bachelor of Engineering (Environmental Engineering) (Honours)	5 years	City	Feb	\$36,480	BH096	6.5 (6.0)	70%	-	-	O
Master of Engineering (Environmental Engineering)	2 years	City	Feb Jul	\$42,240	MC254	6.5 (6.0)	2.0	-	-	-
Master of Engineering (Sustainable Energy)	2 years	City / Bundoora	Feb Jul	\$42,240	MC229	6.5 (6.0)	2.0	-	-	-

KEY:

- 🕒 Duration 📍 Campus 📅 Intake/s \$ 2021 2021 annual fee (\$AU) IELTS Academic IELTS Overall Band (Individual Band) – subject to change
 - 📄 RMIT Code ✓ Entry requirement (min average % or GPA) 📝 Selection task 🔄 Pathways 📌 Notes
- For the most up-to-date information regarding RMIT courses and pathways, please visit rmit.edu.au



MECHANICAL AND AUTOMOTIVE ENGINEERING												
	🕒	📍	📅	\$ 2022	📄	IELTS	✓	📝	📈	🔗	📄	
Advanced Diploma of Engineering (Mechanical)	2 years	City	Feb Jul	\$19,250	C6130	5.5 (5.0)	50%	-	-	-		
Associate Degree in Engineering Technology	2 years	City	Feb Jul	\$34,560	AD026	6.0 (5.5)	50%	-	-	-		
Bachelor of Engineering (Automotive Engineering) (Honours)	4 years	City / Bundoora	Feb Jul	\$41,280	BH074	6.5 (6.0)	65%	-	Y	O, W		
Bachelor of Engineering (Automotive Engineering) (Honours) / Bachelor of Business (Management)	5 years	City / Bundoora	Feb	\$45,408	BH084	6.5 (6.0)	70%	-	-	O, W		
Bachelor of Engineering (Mechanical Engineering) (Honours)	4 years	City / Bundoora	Feb Jul	\$41,280	BH070	6.5 (6.0)	65%	-	Y	O, W		
Bachelor of Engineering (Mechanical Engineering) (Honours) / Bachelor of Business (Management)	5 years	City / Bundoora	Feb Jul	\$45,408	BH089	6.5 (6.0)	70%	-	-	O, W		
Bachelor of Engineering (Mechanical Engineering) (Honours) / Bachelor of Industrial Design (Honours)	5 years	City / Bundoora	Feb	\$45,408	BH093	6.5 (6.0)	70%	-	-	O, W		
Master of Engineering (International Automotive Engineering)	2 years	City / Bundoora	Feb Jul	\$42,240	MC230	6.5 (6.0)	2.0	-	-	W		
Master of Engineering (Mechanical Engineering)	2 years	City	Feb Jul	\$42,240	MC258	6.5 (6.0)	2.0	-	-	-		

MECHATRONICS AND MANUFACTURING SYSTEMS												
	🕒	📍	📅	\$ 2022	📄	IELTS	✓	📝	📈	🔗	📄	
Bachelor of Engineering (Advanced Manufacturing and Mechatronics) (Honours) / Bachelor of Business (International Business)	5 years	City / Bundoora	Feb Jul	\$45,408	BH086	6.5 (6.0)	70%	-	-	W		
Bachelor of Engineering (Advanced Manufacturing and Mechatronics) (Honours)	4 years	City / Bundoora	Feb Jul	\$41,280	BH068	6.5 (6.0)	65%	-	Y	O, W		
Master of Engineering (Manufacturing)	2 years	City / Bundoora	Feb Jul	\$42,240	MC224	6.5 (6.0)	2.0	-	-	W		
Master of Engineering (Robotics and Mechatronics Engineering)	2 years	City	Feb Jul	\$42,240	MC256	6.5 (6.0)	2.0	-	-	-		

TELECOMMUNICATIONS ENGINEERING												
	🕒	📍	📅	\$ 2022	📄	IELTS	✓	📝	📈	🔗	📄	
Master of Engineering (Telecommunications and Network Engineering)	2 years	City	Feb Jul	\$42,240	MC234	6.5 (6.0)	-	-	-	-		

RESEARCH												
	🕒	📍	📅	\$ 2022	📄	IELTS	✓	📝	📈	🔗	📄	
Master of Engineering (Aerospace Engineering)	2 years	City / Bundoora	All year	\$37,440	MR215	6.5 (6.0)	60%	-	Y	FF		
Master of Engineering (Chemical Engineering)	2 years	City	All year	\$37,440	MR217	6.5 (6.0)	60%	-	Y	FF		
Master of Engineering (Civil Engineering)	2 years	City / Bundoora	All year	\$37,440	MR218	6.5 (6.0)	60%	-	Y	W, FF		
Master of Engineering (Electrical and Electronic Engineering)	2 years	City	All year	\$37,440	MR220	6.5 (6.0)	60%	-	Y	FF		
Master of Engineering (Environmental Engineering)	2 years	City / Bundoora	All year	\$37,440	MR219	6.5 (6.0)	60%	-	Y	W, FF		
Master of Engineering (Mechanical and Manufacturing Engineering)	2 years	City / Bundoora	All year	\$37,440	MR216	6.5 (6.0)	60%	-	Y	W, FF		
PhD (Aerospace Engineering)	4 years	City / Bundoora	All year	\$37,440	DR215	6.5 (6.0)	70% or 80%	-	Y	W, FF		
PhD (Chemical Engineering)	4 years	City	All year	\$37,440	DR217	6.5 (6.0)	70% or 80%	-	Y	FF		
PhD (Civil Engineering)	4 years	City / Bundoora	All year	\$37,440	DR218	6.5 (6.0)	70% or 80%	-	Y	W, FF		
PhD (Electrical and Electronic Engineering)	4 years	City	All year	\$37,440	DR220	6.5 (6.0)	70% or 80%	-	Y	FF		
PhD (Environmental Engineering)	4 years	City / Bundoora	All year	\$37,440	DR219	6.5 (6.0)	70% or 80%	-	Y	W, FF		
PhD (Mechanical and Manufacturing Engineering)	4 years	City / Bundoora	All year	\$37,440	DR216	6.5 (6.0)	70% or 80%	-	Y	W, FF		

Footnotes

O This is a combined bachelor and honours degree, and entry is based on senior high school qualifications. Upon completion of this program, students graduate with honours without having to undertake an additional year of study. An honours degree allows you to deepen your knowledge and develop your research, analytical and communication skills, and it is a pathway into postgraduate and higher degree by research studies.

W Classes for this course are delivered across the City and Bundoora campuses. Students may be required to attend both locations.

FF Refer to rmit.edu.au/how-to-apply-for-research for reference.

* Total fee.

KEY:

🕒 Duration 📍 Campus 📅 Intake/s \$ 2022 2022 annual fee (\$AU) IELTS Academic IELTS Overall Band (Individual Band) – subject to change

📄 RMIT Code ✓ Entry requirement (min average % or GPA) 📝 Selection task 📈 Pathways 🔗 Notes

For the most up-to-date information regarding RMIT courses and pathways, please visit rmit.edu.au

Fashion and Textiles

FASHION AND TEXTILES												
	🕒	📍	📅	\$ 2022	📄	IELTS	✓	📝	📈	🔗	📄	
Certificate IV in Custom-Made Footwear	1 year	Brunswick	Feb	\$24,000*	C4389	5.5 (5.0)	50%	-	-	-		
Certificate IV in Textile Design, Development and Production	1 year	Brunswick	Feb	\$21,750*	C4404	5.5 (5.0)	50%	-	-	E		
Diploma of Fashion Styling	1 year	Brunswick	Feb	\$20,000*	C5336	5.5 (5.0)	-	Y	-	-		
Advanced Diploma of Textile Design and Development	1 year	Brunswick	Feb	\$22,250*	C6165	5.5 (5.0)	-	Y	Y	E,A		
Associate Degree in Fashion Design and Technology	2 years	Brunswick	Feb Jul	\$32,640	AD014	6.0 (5.5)	60%	Y	Y	C		
Bachelor of Fashion (Design)	3 years	Brunswick	Feb	\$40,320	BP328	6.5 (6.0)	65%	Y	-	-		
Bachelor of Fashion (Enterprise)	3 years	Brunswick	Feb Jul	\$40,320	BP327	6.5 (6.0)	65%	-	-	-		
Bachelor of Fashion and Textiles (Sustainable Innovation)	3 years	Brunswick	Feb Jul	\$40,320	BP326	6.5 (6.0)	65%	-	-	-		
Bachelor of Textiles (Design)	3 years	Brunswick	Feb	\$37,440	BP121	6.5 (6.0)	65%	Y	Y	E		
Graduate Certificate of Fashion (Entrepreneurship)	0.5 year	Brunswick	Feb Jul	\$18,240	GC166	6.5 (6.0)	2.5	-	-	-		
Graduate Diploma of Fashion (Entrepreneurship)	1 year	Brunswick	Feb Jul	\$36,480	GD203	6.5 (6.0)	2.5	Y	-	-		
Master of Fashion (Entrepreneurship)	2 years	Brunswick	Feb Jul	\$36,480	MC213	6.5 (6.0)	2.5	Y	-	-		
Master of Fashion (Design)	2 years	City	Feb	\$36,480	MC246	6.5 (6.0)	2.0	Y	Y	-		

MERCHANDISING												
	🕒	📍	📅	\$ 2022	📄	IELTS	✓	📝	📈	🔗	📄	
Diploma of Visual Merchandising	1 years	City	Feb Jul	\$24,750*	C5381	5.5 (5.0)	50%	Y	Y	-		
Associate Degree in Fashion and Textile Merchandising	2 years	Brunswick	Feb Jul	\$32,640	AD013	6.0 (5.5)	60%	-	Y	C		

HONOURS												
	🕒	📍	📅	\$ 2022	📄	IELTS	✓	📝	📈	🔗	📄	
Bachelor of Fashion (Design) (Honours)	1 year	City	Feb	\$40,320	BH127	6.5 (6.0)	2.0	Y	Y	K		
Bachelor of Textiles (Design) (Honours)	1 year	City	Feb	\$40,320	BH124	6.5 (6.0)	2.0	Y	-	K		

RESEARCH												
	🕒	📍	📅	\$ 2022	📄	IELTS	✓	📝	📈	🔗	📄	
Master of Design (Fashion and Textiles)	2 years	Brunswick/ City	All year	\$32,640	MR213	6.5 (6.0)	60%	-	-	FF		
Master of Technology (Fashion and Textiles)	2 years	Brunswick	All year	\$32,640	MR214	6.5 (6.0)	60%	-	-	FF		
PhD (Fashion and Textiles)	4 years	Brunswick	All year	\$32,640	DR213	6.5 (6.0)	70%	-	-	FF		

Footnotes

A This course is only available for advanced entry.

C This course includes a professional work placement.

E This course incurs additional costs.

K This is a one-year full time honour degree that is available for high performing students to apply after finishing their undergraduate degree in the relevant discipline. An honours degree allows you to deepen your knowledge and develop your research, analytical and communication skills, and it is a pathway into postgraduate and higher degree by research studies.

FF Refer to rmit.edu.au/how-to-apply-for-research for reference.

* Total fee.

Top 11

RMIT's Bachelor of Fashion (Design) (Honours) is ranked in the top 11 undergraduate fashion design courses in the world¹



UN Sustainable Development Goals

All undergraduate fashion courses at RMIT are underpinned by the UN Sustainable Development Goals



Exchange partnerships

with Parsons The New School of Design, NYC, Amsterdam Fashion Institute and London College of Fashion



Intensive workshops

in Paris and the US focus on the development of technical skills such as pattern making and embroidery

¹ 2019, the Business of Fashion review of the Best Fashion Schools – RMIT's Bachelor of Fashion (Design) (Honours) course was ranked in the top 11 of the undergraduate 'Fashion Design' category, receiving all four badges of merit: Best Overall, Best in Global Influence, Best in Learning Experience and Best in Long Term Value.



For more information visit rmit.edu.au/fashion



Excellence in research¹

RMIT's research is ranked as well above world standard in:

- complementary and alternative medicine
- pharmacology and pharmaceutical sciences
- medical physiology
- physical sciences



Industry leader

RMIT is the only tertiary provider of Chinese medicine education in Victoria



Cutting-edge facilities

Practise on cutting-edge equipment that is widely used in clinical centres around Australia



Supporting WHO

RMIT's expertise in Chinese medicine supports a World Health Organization program to integrate traditional medical practice into public healthcare around the globe

¹ Excellence in Research Australia 2018 report



For more information visit rmit.edu.au/health-science

Health Science

COMPLEMENTARY MEDICINE

	🕒	📍	📅	\$ 2022	📄	IELTS	✓	📝	📈	🗑️
Bachelor of Health Science / Bachelor of Applied Science (Chinese Medicine)	5 years	Bundoora	Feb	\$36,480	BP278	6.5 (6.0)	70%	-	-	-
Bachelor of Health Science / Bachelor of Applied Science (Chiropractic)	5 years	Bundoora	Feb	\$36,480	BP280	6.5 (6.0)	70%	-	-	-
Bachelor of Health Science / Bachelor of Applied Science (Osteopathy)	5 years	Bundoora	Feb	\$36,480	BP279	6.5 (6.0)	70%	-	-	-

MEDICAL RADIATIONS

	🕒	📍	📅	\$ 2022	📄	IELTS	✓	📝	📈	🗑️
Master of Medical Physics	2 years	City	Feb	\$37,440	MC215	6.5 (6.0)	2.0	-	-	-

NURSING AND ALLIED HEALTH

	🕒	📍	📅	\$ 2022	📄	IELTS	✓	📝	📈	🗑️
Diploma of Nursing	2 years	City/ Bundoora	Feb Jul	\$19,250	C5365	7.0 (7.0)	50%	-	-	-
Associate Degree in Health Sciences	2 years	City	Feb Jul	\$31,680	AD019	6.0 (5.5)	50%	-	-	-
Bachelor of Nursing	3 years	Bundoora	Feb Jul	\$36,480	BP032	7.0 (7.0)	65%	-	Y	M, X
Graduate Diploma in Mental Health Nursing	1 year	Bundoora	Feb Jul	\$30,720	GD158	6.5 (6.0)	-	-	-	C

PHARMACY

See page 16 for details

PSYCHOLOGY

	🕒	📍	📅	\$ 2022	📄	IELTS	✓	📝	📈	🗑️
Bachelor of Applied Science (Psychology)	3 years	City/ Bundoora	Feb Jul	\$36,480	BP154	6.5 (6.0)	65%	-	-	-
Bachelor of Criminology and Psychology	3 years	City	Feb Jul	\$30,720	BP295	6.5 (6.0)	70%	-	-	-
Bachelor of Social Science (Psychology)	3 years	City	Feb Jul	\$30,720	BP112	6.5 (6.0)	70%	-	-	-
Bachelor of Social Work (Honours) / Bachelor of Social Science (Psychology)	5 years	City	Feb	\$30,720	BH106	6.5 (6.0)	70%	-	-	O

SOCIAL WORK

See page 35 for details

Footnotes

- C This course includes a professional work placement.
- E This course incurs additional costs.
- K This is a one-year full time honour degree that is available for high performing students to apply after finishing their undergraduate degree in the relevant discipline. An honours degree allows you to deepen your knowledge and develop your research, analytical and communication skills, and it is a pathway into postgraduate and higher degree by research studies.
- M The clinical component of this course starts earlier than other RMIT courses. Students must be enrolled in the course and attending by the date stated in the offer letter.
- O This is a combined bachelor and honours degree, and entry is based on senior high school qualifications. Upon completion of this program, students graduate with honours without having to undertake an additional year of study. An honours degree allows you to deepen your knowledge and develop your research, analytical and communication skills, and it is a pathway into postgraduate and higher degree by research studies. X July entry may be available to applicants with advanced standing and will be assessed on a case-by-case basis. Applicants must have completed a prior nursing course within the past five years to be considered.
- FF Refer to rmit.edu.au/how-to-apply-for-research for reference.
- * Total fee.
- ** IELTS 7.5 (7.0 Reading, 7.0 Writing, 8.0 Listening, 8.0 Speaking)

KEY:

🕒 Duration 📍 Campus 📅 Intake/s \$ 2022 2022 annual fee (\$AU) IELTS Academic IELTS Overall Band (Individual Band) – subject to change
 📄 RMIT Code ✓ Entry requirement (min average % or GPA) 📝 Selection task 📈 Pathways 🗑️ Notes

For the most up-to-date information regarding RMIT courses and pathways, please visit rmit.edu.au

SPORTS SCIENCE

	🕒	📍	📅	\$ 2022	📄	IELTS	✓	📝	📈	🗑️
Bachelor of Health, Physical Education and Sport (Secondary)	4 years	Bundoora	Feb	\$36,480	BP319	7.5**	-	-	-	E, C

HONOURS

	🕒	📍	📅	\$ 2022	📄	IELTS	✓	📝	📈	🗑️
Bachelor of Pharmaceutical Sciences (Honours)	1 year	Bundoora	Feb	\$40,320	BH121	6.5 (6.0)	2.0	Y	-	K

RESEARCH

	🕒	📍	📅	\$ 2022	📄	IELTS	✓	📝	📈	🗑️
Master of Applied Science (Health and Medical Physics)	2 years	City	All year	\$34,560	MR233	6.5 (6.0)	60%	-	Y	FF
Master of Science (Complementary Medicine)	2 years	Bundoora	All year	\$31,680	MR224	6.5 (6.0)	60%	-	Y	FF
Master of Science (Laboratory and Clinical Science)	2 years	Bundoora	All year	\$31,680	MR234	6.5 (6.0)	60%	-	Y	FF
Master of Science (Medical Radiations Science)	2 years	Bundoora	All year	\$34,560	MR228	6.5 (6.0)	60%	-	Y	FF
Master of Science (Nursing)	2 years	Bundoora	All year	\$31,680	MR225	6.5 (6.0)	60%	-	Y	FF
Master of Science (Psychology)	2 years	Bundoora	All year	\$31,680	MR226	6.5 (6.0)	60%	-	Y	FF
PhD (Complementary Medicine)	4 years	Bundoora	All year	\$31,680	DR224	6.5 (6.0)	70% or 80%	-	Y	FF
PhD (Medical Radiations Science)	4 years	Bundoora	All year	\$34,560	DR228	6.5 (6.0)	70% or 80%	-	Y	FF
PhD (Nursing)	4 years	Bundoora	All year	\$31,680	DR225	6.5 (6.0)	70% or 80%	-	Y	FF
PhD (Psychology)	4 years	Bundoora	All year	\$31,680	DR226	6.5 (6.0)	70% or 80%	-	Y	FF

Top 150

Global universities in computer science and information systems¹



Excellence in research

RMIT's research in artificial intelligence and image processing is rated as above world standard by the ARC



Flexible majors

RMIT's Bachelor of IT offers a range of specialisations, allowing you to tailor your learning to meet your aspirations



Pathways into bachelor degrees

The Associate Degree in IT provides pathways into several of RMIT's bachelor degrees in ICT

Information Technology

COMPUTER ENGINEERING

See page 25 for details

COMPUTER SCIENCE

	🕒	📍	📅	💰 2022	📄	IELTS	✓	📝	📈	🔗
Bachelor of Computer Science	3 years	City	Feb Jul	\$36,480	BP094	6.5 (6.0)	65%	-	-	-

INFORMATION AND SECURITY

	🕒	📍	📅	💰 2022	📄	IELTS	✓	📝	📈	🔗
Master of Cyber Security	2 years	City	Feb Jul	\$37,440	MC159	6.5 (6.0)	2.0	-	-	-

INFORMATION SYSTEMS

See page 19 for details

INFORMATION TECHNOLOGY

	🕒	📍	📅	💰 2022	📄	IELTS	✓	📝	📈	🔗
Diploma of Information Technology	1 year	City	Feb Jul	\$22,250*	C5395	5.5 (5.0)	-	-	-	-
Associate Degree in Information Technology	2 years	City	Feb Jul	\$33,600	AD006	6.0 (5.5)	50%	-	-	-
Associate Degree in Digital Technologies (Advanced Manufacturing)	2 years	City	Feb Jul	\$34,560	AD028	6.0 (5.5)	50%	-	-	B
Bachelor of Information Technology	3 years	City	Feb Jul	\$36,480	BP162	6.5 (6.0)	65%	-	Y	-
Master of Information Technology	2 years	City	Feb Jul	\$37,440	MC208	6.5 (6.0)	2.0	-	-	-

SOFTWARE ENGINEERING

	🕒	📍	📅	💰 2022	📄	IELTS	✓	📝	📈	🔗
Bachelor of Software Engineering	4 years	City	Feb Jul	\$36,480	BP096	6.5 (6.0)	65%	-	-	-

HONOURS

	🕒	📍	📅	💰 2022	📄	IELTS	✓	📝	📈	🔗
Bachelor of Engineering (Computer and Network Engineering) (Honours) / Bachelor of Computer Science	5 years	City	Feb Jul	\$45,408	BH091	6.5 (6.0)	70%	-	-	O

RESEARCH

	🕒	📍	📅	💰 2022	📄	IELTS	✓	📝	📈	🔗
Master of Business (Business Information Systems)	2 years	-	All year	\$32,640	MR201	6.5 (6.0)	60%	-	Y	FF
Master of Science (Computer Science)	2 years	-	All year	\$34,560	MR221	6.5 (6.0)	60%	-	Y	FF
PhD (Business Information Systems)	4 years	-	All year	\$36,480	DR201	6.5 (6.0)	70%	-	Y	FF
PhD (Computer Science)	4 years	-	All year	\$34,560	DR221	6.5 (6.0)	70%	-	Y	FF

Footnotes

- B July entry may be available to students who are granted course/subject exemptions or advanced entry based on previous study.
- O This is a combined bachelor and honours degree, and entry is based on senior high school qualifications. Upon completion of this program, students graduate with honours without having to undertake an additional year of study. An honours degree allows you to deepen your knowledge and develop your research, analytical and communication skills, and it is a pathway into postgraduate and higher degree by research studies.
- FF Refer to rmit.edu.au/how-to-apply-for-research for reference.
- * Total fee.

KEY:

- 🕒 Duration 📍 Campus 📅 Intake/s 💰 2022 2022 annual fee (\$AU) IELTS Academic IELTS Overall Band (Individual Band) – subject to change
 - 📄 RMIT Code ✓ Entry requirement (min average % or GPA) 📝 Selection task 📈 Pathways 🔗 Notes
- For the most up-to-date information regarding RMIT courses and pathways, please visit rmit.edu.au



For more information visit rmit.edu.au/it

Law

JUSTICE

	🕒	📍	📅	💰 2022	📄	IELTS	✓	📝	📈	🔗
Bachelor of Criminal Justice	3 years	City	Feb Jul	\$30,720	BP023	6.5 (6.0)	70%	-	-	C
Bachelor of Criminology and Psychology	3 years	City	Feb Jul	\$30,720	BP295	6.5 (6.0)	70%	-	-	-
Bachelor of Justice and Criminology (Honours)	1 year	City	Feb Jul	\$30,720	BH060	6.5 (6.0)	3.0	Y	-	K
Master of Justice and Criminology	2 years	City	Feb Jul	\$33,600	MC223	6.5 (6.0)	-	-	-	-

LAWS

	🕒	📍	📅	💰 2022	📄	IELTS	✓	📝	📈	🔗
Bachelor of Laws	3 years	City	Feb	\$39,360	BP335	6.5 (6.0)	85%	-	Y	-
Bachelor of Laws / Bachelor of Business (Information Systems)	5 years	City	Feb	\$39,360	BP336	6.5 (6.0)	88%	-	-	-
Bachelor of Laws / Bachelor of Business (Economics and Finance)	5 years	City	Feb	\$39,360	BP339	6.5 (6.0)	88%	-	-	-
Juris Doctor	3 years	City	Feb Jul	\$48,960	MC161	6.5 (6.0)	2.5	-	-	-

LEGAL ADMINISTRATION AND POLICY

	🕒	📍	📅	💰 2022	📄	IELTS	✓	📝	📈	🔗
Bachelor of Legal and Dispute Studies	3 years	City	Feb Jul	\$30,720	BP204	6.5 (6.0)	70%	-	-	-

RESEARCH

	🕒	📍	📅	💰 2022	📄	IELTS	✓	📝	📈	🔗
Master of Business (Business and Law)	2 years	-	All year	\$32,640	MR205	6.5 (6.0)	-	-	Y	FF
Master of Social Science (Global, Urban and Social Studies)	2 years	-	All year	\$29,760	MR210	6.5 (6.0)	-	-	Y	FF
PhD (Global, Urban and Social Studies)	4 years	-	All year	\$29,760	DR210	6.5 (6.0)	-	-	Y	FF
PhD (Law)	4 years	-	All year	\$36,480	DR206	6.5 (6.0)	-	-	Y	FF

Footnotes

- C This course includes a professional work placement.
- K This is a one-year full time honours degree that is available for high performing students to apply after finishing their undergraduate degree in the relevant discipline. An honours degree allows you to deepen your knowledge and develop your research, analytical and communication skills, and it is a pathway into postgraduate and higher degree by research studies.
- FF Refer to rmit.edu.au/how-to-apply-for-research for reference.

30+

RMIT has more than 30 years of experience in justice training and education



50-day work placement

Undertake a 50-day work placement in a criminal justice organisation



Law Students' Society

The RMIT Law Students' Society runs social, education and careers events year-round



Diverse electives

- Forensic studies
- Drug-related crime
- International policing
- Youth justice
- Terrorism



For more information visit rmit.edu.au/law

#3

in Australia for communication and media studies¹

#41

in the world for communication and media studies¹



Exchange partnerships

with renowned University of the Arts London (London College of Communication)



Excellence in research

RMIT's research in communication and media studies is rated as well above world standard, just one of two Australian universities to achieve this rating²



Live music capital

Study in Melbourne, which has more live music venues per capita than any other city in the world³

¹ 2021 QS World University Rankings by Subject

² 2018 Excellence in Research Australia Report by the Australian Research Council

³ Music Victoria 2017 Census Report



For more information visit rmit.edu.au/media

Media

MUSIC AND AUDIOVISUAL										
	🕒	📍	📅	💰 2022	📄	IELTS	✓	📝	📈	📌
Diploma of Music Industry (Sound Production)	1 year	City	Feb	\$22,750*	C5378	5.5 (5.0)	50%	Y	-	-
Advanced Diploma of Music Industry (Sound Production)	1 year	City	Feb	\$22,000*	C6150	5.5 (5.0)	-	Y	Y	A
Bachelor of Arts (Music Industry)	3 years	City	Feb Jul	\$31,680	BP047	6.5 (6.0)	65%	-	Y	B
SCREEN AND MEDIA										
	🕒	📍	📅	💰 2022	📄	IELTS	✓	📝	📈	📌
Advanced Diploma of Screen and Media	1 year	City	Feb	\$23,500*	C6151	5.5 (5.0)	-	Y	Y	A
Associate Degree in Screen and Media Production	2 years	City	Feb Jul	\$31,680	AD017	6.0 (5.5)	60%	Y	-	-
Diploma of Digital Media Technologies	1 year	City	Feb	\$22,750	C5384	5.5 (5.0)	-	-	-	-
Diploma of Screen and Media	1 year	City	Feb	\$23,500	C5350	5.5 (5.0)	50%	Y	-	-
Bachelor of Communication (Media)	2.5 years 3 years	City	Jul Feb Jul	\$42,624 (2.5 years), \$35,520 (3 years)	BP221	6.5 (6.0)	65%	-	Y	L,B
Master of Media	2 years	City	Feb Jul	\$36,480	MC188	6.5 (6.0)	2.5	-	-	-
HONOURS										
	🕒	📍	📅	💰 2022	📄	IELTS	✓	📝	📈	📌
Bachelor of Media and Communication (Honours)	1 year	City	Feb	\$34,560	BH066	6.5 (6.0)	3	Y	-	K

Footnotes

- A This course is only available for advanced entry.
- B July entry may be available to students who are granted course/subject exemptions or advanced entry based on previous study.
- K This is a one-year full time honour degree that is available for high performing students to apply after finishing their undergraduate degree in the relevant discipline. An honours degree allows you to deepen your knowledge and develop your research, analytical and communication skills, and it is a pathway into postgraduate and higher degree by research studies.
- L This version of the media course is meant for year one commencement for July entry. The course structure is accelerated. It consist of six semesters over 2.5 calendar years by undertaking four first-year courses in intensive mode over spring (Nov/Dec) and (Jan/Feb) summer semesters.

KEY:

🕒 Duration 📍 Campus 📅 Intake/s 💰 2022 2022 annual fee (\$AU) IELTS Academic IELTS Overall Band (Individual Band) – subject to change 📄 RMIT Code ✓ Entry requirement (min average % or GPA) 📝 Selection task 📈 Pathways 📌 Notes
For the most up-to-date information regarding RMIT courses and pathways, please visit rmit.edu.au

Science

APPLIED SCIENCE										
	🕒	📍	📅	💰 2022	📄	IELTS	✓	📝	📈	📌
Associate Degree in Applied Science	2 years	City	Feb	\$31,680	AD012	6.0 (5.5)	50%	-	-	C
Bachelor of Science	3 years	City	Feb Jul	\$36,480	BP229	6.5 (6.0)	65%	-	Y	P
Bachelor of Science (Applied Science) / Bachelor of Business (Management)	4 years	City	Feb Jul	\$41,040	BP305	6.5 (6.0)	70%	-	-	-
Bachelor of Science (Dean's Scholar) (Honours)	4 years	City	Feb Jul	\$36,480	BH101	6.5 (6.0)	75%	-	-	O
BIOTECHNOLOGY AND BIOLOGICAL SCIENCES										
	🕒	📍	📅	💰 2022	📄	IELTS	✓	📝	📈	📌
Bachelor of Science (Biotechnology)	3 years	City	Feb Jul	\$36,480	BP226	6.5 (6.0)	65%	-	Y	-
Bachelor of Science (Biotechnology) / Bachelor of Biomedical Science	4 years	City / Bundoora	Feb	\$36,480	BP293	6.5 (6.0)	70%	-	-	W
Master of Biotechnology	2 years	City / Bundoora	Feb Jul	\$37,440	MC111	6.5 (6.0)	2.0	-	-	F, W
CHEMISTRY										
	🕒	📍	📅	💰 2022	📄	IELTS	✓	📝	📈	📌
Bachelor of Science (Applied Chemistry) / Bachelor of Engineering (Chemical Engineering) (Honours)	5 years	City	Feb	\$36,480	BH098	6.5 (6.0)	70%	-	-	O
ENVIRONMENTAL SCIENCE										
	🕒	📍	📅	💰 2022	📄	IELTS	✓	📝	📈	📌
Bachelor of Environmental Science	3 year	City	Feb Jul	\$36,480	BP192	6.5 (6.0)	65%	-	Y	-
Bachelor of Environmental Science / Bachelor of Business (Management)	4 years	City	Feb Jul	\$41,040	BP161	6.5 (6.0)	70%	-	-	-
Bachelor of Environmental Science / Bachelor of Engineering (Environmental Engineering) (Honours)	5 years	City	Feb	\$36,480	BH096	6.5 (6.0)	70%	-	-	O
Bachelor of Environmental Science / Bachelor of Environment and Society	4 years	City	Feb	\$36,480	BP193	6.5 (6.0)	70%	-	-	-
FOOD SCIENCE AND TECHNOLOGY										
	🕒	📍	📅	💰 2022	📄	IELTS	✓	📝	📈	📌
Bachelor of Science (Food Technology) / Bachelor of Business (Management)	4 years	City / Bundoora	Feb Jul	\$41,040	BP289	6.5 (6.0)	70%	-	-	W
Bachelor of Science (Food Technology and Nutrition)	3 years	City / Bundoora	Feb Jul	\$36,480	BP199	6.5 (6.0)	65%	-	-	W
Master of Food Science and Technology	2 years	City / Bundoora	Feb Jul	\$37,440	MC237	6.5 (6.0)	2.0	-	Y	-
MATHEMATICS, STATISTICS AND ANALYTICS										
	🕒	📍	📅	💰 2022	📄	IELTS	✓	📝	📈	📌
Bachelor of Data Science	3 years	City	Feb Jul	\$36,480	BP340	6.5 (6.0)	65%	-	-	-
Bachelor of Science (Mathematics)	3 years	City	Feb Jul	\$36,480	BP083	6.5 (6.0)	65%	-	-	-
Master of Analytics	2 years	City	Feb Jul	\$36,480	MC242	6.5 (6.0)	-	-	-	-
Master of Data Science	2 years	City	Feb Jul	\$37,440	MC267	6.5 (6.0)	2.0	-	-	-
Master of Statistics and Operations Research	2 years	City	Feb Jul	\$36,480	MC004	6.5 (6.0)	-	-	-	-
NANOTECHNOLOGY										
	🕒	📍	📅	💰 2022	📄	IELTS	✓	📝	📈	📌
Bachelor of Science (Nanotechnology) / Bachelor of Science (Applied Sciences)	4 years	City	Feb	\$36,480	BP247	6.5 (6.0)	70%	-	-	-

Footnotes

- C This course includes a professional work placement.
- F A part of this course will be taught at the RMIT Bundoora Campus.
- O This is a combined bachelor and honours degree, and entry is based on senior high school qualifications. Upon completion of this program, students graduate with honours without having to undertake an additional year of study. An honours degree allows you to deepen your knowledge and develop your research, analytical and communication skills, and it is a pathway into postgraduate and higher degree by research studies.
- P Streams available are Applied Science, Applied Chemistry, Biological Sciences and Physics.
- W Classes for this course are delivered across the City and Bundoora campuses. Students may be required to attend both locations.

* Total fee.



World #1

RMIT was named Geospatial Research Institute of the Year in 2019 by the Geospatial World Forum



Find your niche

RMIT offers both flexible and specialised courses



Excellence in research¹

RMIT's research is rated as well above world standard in:

- Environmental science
- Physical sciences
- Clinical sciences
- Microbiology
- Analytical chemistry
- Macromolecular and materials chemistry
- Physical chemistry



Work placements

Industry projects and placements expose you to real-world challenges

¹ 2018 Excellence in Research Australia Report.



For more information visit rmit.edu.au/science

SURVEYING AND GEOSPATIAL SCIENCES										
	🕒	📍	📅	\$ 2022	📄	IELTS	✓	📝	🔄	🔗
Bachelor of Applied Science (Surveying) (Honours)	4 years	City	Feb Jul	\$36,480	BH116	6.5 (6.0)	65%	-	-	B, O
Bachelor of Science (Geospatial Science) (Honours)	4 years	City	Feb Jul	\$36,480	BH117	6.5 (6.0)	65%	-	-	B, O
Master of Geospatial Science	2 years	City	Feb Jul	\$37,440	MC265	6.5 (6.0)	-	-	-	-

RESEARCH										
	🕒	📍	📅	\$ 2022	📄	IELTS	✓	📝	🔄	🔗
Master of Science (Applied Biology and Biotechnology)	2 years	City / Bundoora	All year	\$34,560	MR231	6.5 (6.0)	60%	-	Y	W, FF
Master of Science (Applied Chemistry)	2 years	City	All year	\$34,560	MR229	6.5 (6.0)	60%	-	Y	FF
Master of Science (Applied Physics)	2 years	City	All year	\$34,560	MR230	6.5 (6.0)	60%	-	Y	FF
Master of Science (Food Science)	2 years	City / Bundoora	All year	\$34,560	MR232	6.5 (6.0)	60%	-	Y	W, FF
Master of Science (Geospatial Sciences)	2 years	City	All year	\$34,560	MR223	6.5 (6.0)	-	-	-	FF
Master of Science (Mathematical Sciences)	2 years	City	All year	\$34,560	MR222	6.5 (6.0)	60%	-	Y	FF
Master of Science (Psychology)	2 years	Bundoora	All year	\$31,680	MR226	6.5 (6.0)	60%	-	Y	FF
PhD (Applied Biology and Biotechnology)	4 years	City / Bundoora	All year	\$34,560	DR231	6.5 (6.0)	70% or 80%	-	Y	W, FF
PhD (Applied Chemistry)	4 years	City	All year	\$34,560	DR229	6.5 (6.0)	70% or 80%	-	Y	FF
PhD (Applied Physics)	4 years	City	All year	\$34,560	DR230	6.5 (6.0)	70% or 80%	-	Y	FF
PhD (Food Science)	4 years	City / Bundoora	All year	\$34,560	DR232	6.5 (6.0)	70% or 80%	-	Y	W, FF
PhD (Geospatial Sciences)	4 years	City	All year	\$34,560	DR223	6.5 (6.0)	70% or 80%	-	Y	FF
PhD (Mathematical Sciences)	4 years	City	All year	\$34,560	DR222	6.5 (6.0)	70% or 80%	-	Y	FF

Footnotes

- B July entry may be available to students who are granted course/subject exemptions or advanced entry based on previous study.
- O This is a combined bachelor and honours degree, and entry is based on senior high school qualifications. Upon completion of this program, students graduate with honours without having to undertake an additional year of study. An honours degree allows you to deepen your knowledge and develop your research, analytical and communication skills, and it is a pathway into postgraduate and higher degree by research studies.
- W Classes for this course are delivered across the City and Bundoora campuses. Students may be required to attend both locations.
- FF Refer to rmit.edu.au/how-to-apply-for-research for reference.
- * Total fee.

KEY:

- 🕒 Duration 📍 Campus 📅 Intake/s \$ 2022 2022 annual fee (\$AU) IELTS Academic IELTS Overall Band (Individual Band) – subject to change
 - 📄 RMIT Code ✓ Entry requirement (min average % or GPA) 📝 Selection task 🔄 Pathways 🔗 Notes
- For the most up-to-date information regarding RMIT courses and pathways, please visit rmit.edu.au

Social Science

INTERNATIONAL STUDIES										
	🕒	📍	📅	\$ 2022	📄	IELTS	✓	📝	🔄	🔗
Bachelor of International Studies										
Bachelor of International Studies (Development)										
Bachelor of International Studies (Global Security)	3 years	City	Feb Jul	\$29,760	BP332DEV BP332GS	6.5 (6.0)	65%	-	-	-
Bachelor of International Studies (Languages)					BP332LAN					
Master of International Development	2 years	City	Feb Jul	\$33,600	MC211	6.5 (6.0)	-	-	-	-

LANGUAGES, TRANSLATING AND INTERPRETING										
	🕒	📍	📅	\$ 2022	📄	IELTS	✓	📝	🔄	🔗
Diploma of Interpreting (LOTE-English)	1 year	City	Feb Jul	\$12,000*	C5364	6.0 (5.5)	50%	Y	-	-
Advanced Diploma of Interpreting (LOTE-English)	1 year	City	Feb Jul	\$13,750*	C6154	6.5 (6.0)	50%	Y	Y	-
Graduate Certificate in Translating and Interpreting	0.5 year	City	Feb Jul	\$16,800	GC185	6.5 (6.0)	-	Y	-	-
Graduate Diploma in Translating and Interpreting	1 year	City	Feb Jul	\$33,600	GD168	6.5 (6.0)	-	Y	Y	-
Master of Translating and Interpreting	2 year	City	Feb Jul	\$33,600	MC214	6.5 (6.0)	-	Y	Y	-

PUBLIC POLICY										
	🕒	📍	📅	\$ 2022	📄	IELTS	✓	📝	🔄	🔗
Master of Public Policy	2 years	City	Feb Jul	\$33,600	MC216	6.5 (6.0)	2.5	-	-	-

SOCIAL WORK										
	🕒	📍	📅	\$ 2022	📄	IELTS	✓	📝	🔄	🔗
Bachelor of Social Work (Honours) / Bachelor of Social Science (Psychology)	5 years	City	Feb	\$30,720	BH106	6.5 (6.0)	70%	-	-	O
Bachelor of Youth Work and Youth Studies	3 years	City	Feb Jul	\$30,720	BP322	6.5 (6.0)	70%	-	-	C
Bachelor of Social Work (Honours)	4 years	City	Feb	\$31,680	BH105	6.5 (6.0)	70%	-	-	O
Master of Social Work	2 years	City	Feb	\$33,600	MC150	7.0 (7.0)	-	Y	-	AA

HONOURS										
	🕒	📍	📅	\$ 2022	📄	IELTS	✓	📝	🔄	🔗
Bachelor of Arts (International Studies) (Honours)	1 year	City	Feb Jul	\$30,720	BH049	6.5 (6.0)	3.0	Y	-	K

RESEARCH										
	🕒	📍	📅	\$ 2022	📄	IELTS	✓	📝	🔄	🔗
Master of Social Science (Global, Urban and Social Studies)	2 years	-	All year	\$29,760	MR210	6.5 (6.0)	60%	-	-	FF
PhD (Global, Urban and Social Studies)	4 years	-	All year	\$29,760	DR210	6.5 (6.0)	70%	-	-	FF

Footnotes

- C This course includes a professional work placement.
- K This is a one-year full time honour degree that is available for high performing students to apply after finishing their undergraduate degree in the relevant discipline. An honours degree allows you to deepen your knowledge and develop your research, analytical and communication skills, and it is a pathway into postgraduate and higher degree by research studies.
- O This is a combined bachelor and honours degree, and entry is based on senior high school qualifications. Upon completion of this program, students graduate with honours without having to undertake an additional year of study. An honours degree allows you to deepen your knowledge and develop your research, analytical and communication skills, and it is a pathway into postgraduate and higher degree by research studies.
- AA This course has limited spaces and applications must be submitted by 1 November (in any given year) in order to be considered.
- FF Refer to rmit.edu.au/how-to-apply-for-research for reference.
- * Total fee.

#1

RMIT is ranked number one in the world for its efforts to reduce inequalities¹

Top 100

Among the world's top 100 universities in development studies²

40+

RMIT has been teaching social work for more than 40 years



Learn from experts with strong links to industry

¹ Inaugural Times Higher Education University Impact Rankings. This ranking focuses on measuring universities' social, environmental and economic impact and progress towards the UN Sustainable Development Goals
² QS World University Rankings by Subject 2021



For more information visit rmit.edu.au/social-science



For information on how to apply, visit
rmit.edu.au/study-with-us/applying-to-rmit

Contact us

330 Swanston Street
(cnr La Trobe Street)
Melbourne VIC 3000
Tel. +61 3 9925 2260

rmit.edu.au/contact-us

RMIT University

GPO Box 2476
Melbourne VIC 3001

rmit.edu.au

This guide provides information about RMIT's Melbourne-based programs for prospective international students. Prepared March 2021. Every effort has been made to ensure the information contained in this publication is accurate and current at the date of printing. For the most up-to-date information, please refer to the RMIT University website before lodging your application. RMIT University CRICOS Provider Code: 00122A | RMIT Training Pty Ltd CRICOS Provider Code: 01912G | RMIT University RTO Code: 3046

Connect with RMIT

